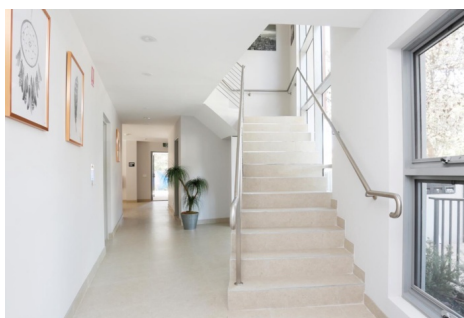


\$610 a week | 🏠 S 📄 1

📍 5/756 Anzac Parade Maroubra NSW



\$610 a week



📍 5/756 Anzac Parade Maroubra NSW

Bright studio apartment in Maroubra

Conveniently located in the heart of Maroubra Junction in close proximity to the Pacific Square Shopping Centre, public transport, local cafes & restaurants, minutes walk to local parks, schools, and popular beaches.

This apartment offers a contemporary lifestyle with low-maintenance living in a private and secure building of only 9 boutique apartments all with full use of the building's shared facilities.

The ideal living location for ease of access to the UNSW Campus as well as the medical precinct Prince of Whales Hospital and Sydney Children's Hospital.

Property features include:

- Natural light throughout with a generous-sized balcony
- The kitchen has lots of cupboards and storage space.
- Stylish bathroom with high-end finishes.
- Coin-operated shared internal laundry facilities.
- Approx. 7.14 km to CBD, with a short 10 min Drive to CBD via Anzac Parade.
- Public transport is easily accessible via S.T.A buses.
- Fridge and microwave can be supplied upon request

Please book an inspection time or contact the agent if you would like to inspect this property.

By registering for an inspection, you will be instantly informed of any updates, changes or cancellations for your appointment.

Once you have inspected the property, you will be sent a link to apply online by our agency.

IMPORTANT Whilst every care is taken in the preparation of the information contained in this marketing, LITTLE Real Estate, will not be held liable for any error in typing or information. All information is considered correct at the time of advertising. Prior to applying for the property, please ensure any specific requirements have been discussed with your preferred service providers.

Bond

\$2,440

Availability

Wednesday 17 June



Carlo Alloa

02 9301 5615

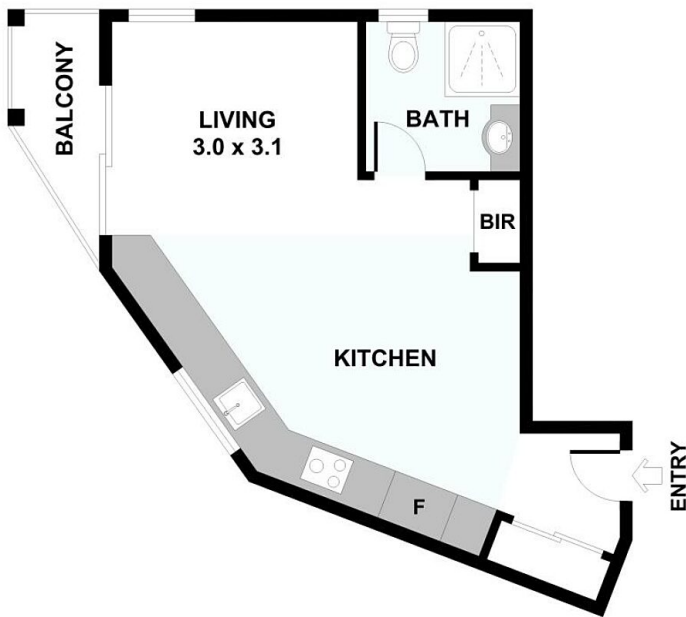
\$610 a week

🛏 S 🚿 1



📍 5/756 Anzac Parade Maroubra NSW

5/756 Anzac Parade, Maroubra



TOTAL INTERNAL AREA APPROX : 28 m²

Please note: All stated dimensions are approximate only. Particulars given are for general information only and do not constitute any representation on the part of the vendor or agent.

