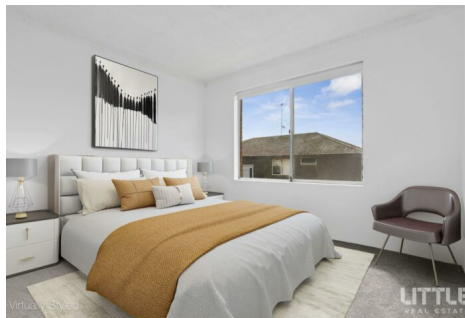
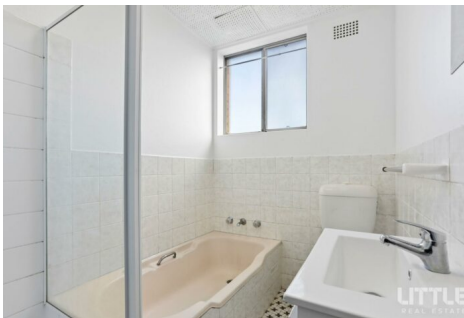


\$680,000 - \$698,000

| 🛏 2 🚿 1 🚗 1



📍 9/32 Guinea Street KOGARAH NSW



\$680,000 - \$698,000

|  2  1  1



 9/32 Guinea Street KOGARAH NSW

PERFECT LOCATION

Perfectly suited for first home buyers, downsizers, or astute investors, this recently painted and new carpet is this spacious 1st floor 101sqm 2-bedroom unit in a boutique block of just 15 offers comfort and exceptional convenience to St George Public & Private Hospitals, 600 m to Kogarah Train Station, local shops, and a wide range of amenities only moments away.

Property Highlights:

- original kitchen
- Modern bathroom with separate bathtub and shower
- Internal laundry for added practicality
- Open-plan living and dining area leads to spacious balcony
- Two generous bedrooms
- Lock-up garage providing secure parking or valuable additional storage
- Short distance to St George Public & Private Hospitals
- Very close proximity to Kogarah Train Station
- Easy access to public transport, local shops, schools, parks, and lifestyle amenities

Disclaimer:

Little Real Estate has not independently checked any of the information we merely pass on. We make no comment on and give no warranty as to the accuracy of the information contained in this document which does not constitute all or any part of any offer or contract by the recipient. Prospective purchasers must rely on their own enquiries and should satisfy themselves as to the truth or accuracy of all information given by their own inspections, searches, inquiries, advices or as is otherwise necessary. No duty of care is assumed by Little Real Estate toward the recipient with regard to the use of this information and all information given is given without responsibility.

** Some images included in the listing have been virtually staged to help showcase the intended use and true potential of spaces in the home **



Simon Saad

Sales Consultant, NSW

simon.saad@little.com.au

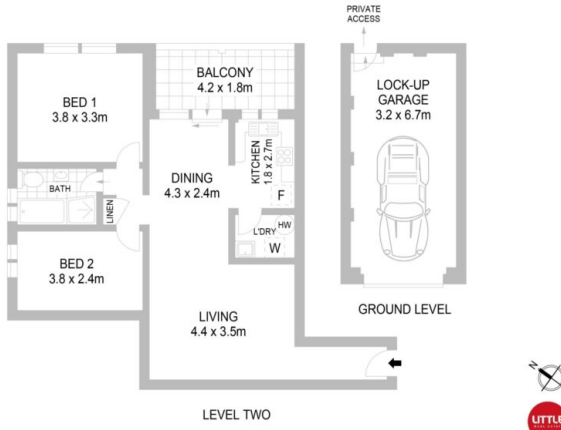
0424 424 236

\$680,000 - \$698,000

2 1 1



9/32 Guinea Street KOGARAH NSW



This floorplan is intended as a guide only. Layout dimensions are approximate only.
No representations or warranties of any nature whatsoever are given or intended. Anyone using this information should rely on their own enquiries.