

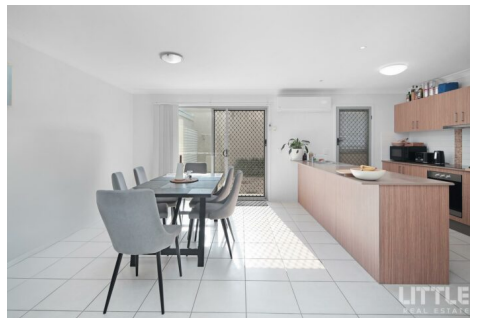
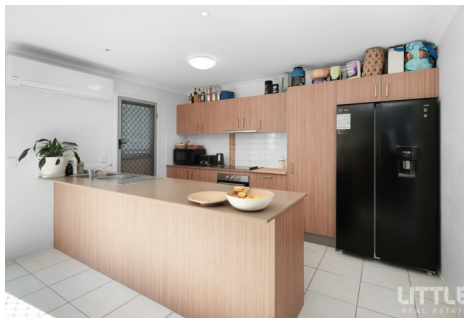
\$769,000

3

2

2

4/1 Christopher Street PIMPAMA QLD



**\$769,000**



📍 4/1 Christopher Street PIMPAMA QLD

## Smart Buying in Booming Pimpama

Discover effortless living in this modern and low-maintenance home, perfectly positioned in the heart of booming Pimpama. Whether you're a first-home buyer, downsizer, or savvy investor, this property ticks all the boxes.

### Property Features:

- 3 spacious bedrooms with built-in wardrobes
- Master bedroom with ensuite
- Open-plan living and dining with air-conditioning
- Modern kitchen with stainless steel appliances and ample storage
- Outdoor patio and internal courtyard - ideal for kids and pets
- Secure lock-up double garage

### Location Highlights:

- Minutes to Pimpama City Shopping Centre & Westfield Coomera
- Easy M1 access - Brisbane or Gold Coast within reach
- Close to local schools, parks, and transport links

This is an unbeatable opportunity to secure a stylish home in one of the Gold Coast's fastest-growing suburbs.

Don't miss out - contact us today to arrange your private inspection!

### Disclaimer:

Little Real Estate has not independently checked any of the information we merely pass on. We make no comment on and give no warranty as to the accuracy of the information contained in this document which does not constitute all or any part of any offer or contract by the recipient. Prospective purchasers must rely on their own enquiries and should satisfy themselves as to the truth or accuracy of all information given by their own inspections, searches, inquiries, advices or as is otherwise necessary. No duty of care is assumed by Little Real Estate toward the recipient with regard to the use of this information and all information given is given without responsibility.

This property is being sold by without a price and therefore a price guide can not be provided. The website may have filtered the property into a price bracket for website functionality purposes.

\*\* Some images included in the listing have been virtually staged to help showcase the intended use and true potential of spaces in the home \*\*

\$769,000

3 2 2



4/1 Christopher Street PIMPAMA QLD

4/1 Christopher Street Pimpama

3 | 2 | 2



Disclaimer: Floor plan measurements are approximate and for illustrative purposes only.