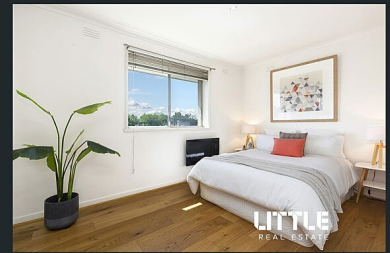
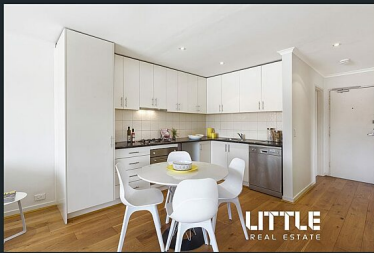


\$530 a week | 🛏️ 2 🚿 1 🚗 1

📍 9/25 Gladstone Avenue Armadale VIC



\$530 a week

🛏 2 🚿 1 🚗 1



📍 9/25 Gladstone Avenue Armadale VIC

Fully Furnished Apartment

PROPERTY COMES FULLY FURNISHED!

PLEASE NOTE FURNITURE IN PHOTOS IS NOT THE FURNITURE THAT COME WITH THE PROPERTY.

Nestled in a boutique block, this updated two-bedroom retreat offers a prime location in a desirable Armadale area, just steps from Glenferrie Road.

Experience spacious, light-filled living and dining areas, complemented by a modern kitchen featuring stainless-steel appliances, including a dishwasher, and plenty of storage.

Situated on the top floor, you'll find a stylish bathroom with a fully tiled shower over the bath, along with off-street parking and split-system heating and cooling.

Key features include:

- Two generous bedrooms with mirrored built-in robes and panel heating
- Recessed downlighting
- Beautiful hardwood flooring
- Secure intercom entry

Enjoy the convenience of a five-minute walk to Malvern train station, various tram routes, and the diverse offerings of Malvern Central shopping. This is the perfect place to call home!

Please book an inspection time or contact the agent if you would like to inspect this property.

By registering for an inspection, you will be instantly informed of any updates, changes or cancellations for your appointment.

Once you have inspected the property, you will be sent a link to apply online by our agency

IMPORTANT Whilst every care is taken in the preparation of the information contained in this marketing, LITTLE Real Estate, will not be held liable for any error in typing or information. All information is considered correct at the time of advertising.

Prior to applying for the property, please ensure any specific requirements have been discussed with your preferred service providers.

Bond

\$2,302

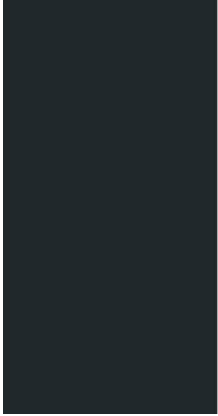
Availability

Friday 4 October

\$530 a week

2 1 1

9/25 Gladstone Avenue Armadale VIC



This floor plan is intended as a guide only. Layout dimensions are approximate only. No representation or warranty of any nature whatsoever is given or intended. Any person using this information should rely on their own enquiries.

