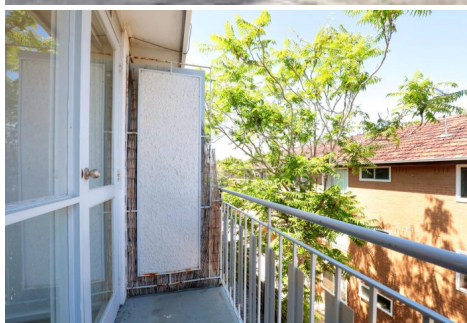


**\$350 a week** |  1  1  1

 16/51 Chapel Street St Kilda VIC



**\$350 a week**



1



1



1



📍 16/51 Chapel Street St Kilda VIC

## Bright Spacious Apartment with Balcony

What a fantastic opportunity to secure position perfect blue chip rental in one of Melbourne's most cosmopolitan and vibrant suburbs. This light, bright and spacious one bedroom apartment features built in wardrobes and a generous sized bathroom. Chapel Street really delivers on all fronts and presents a multitude of lifestyle options with shops, cafes, restaurants, both boutique and high end fashion. Getting around is a breeze with a multitude of transport options including: tram and train access directly into the C.B.D, bus services, bike tracks and taxi ranks.

Features include:

- Gas cooking facilities
- Private balcony
- Practical bathroom with laundry space and bathtub
- Security entrance
- Off Street Parking Space for One

Please book an inspection time or contact the agent if you would like to inspect this property.

By registering for an inspection, you will be instantly informed of any updates, changes or cancellations for your appointment.

Once you have inspected the property, you will be sent a link to apply online by our agency

**\*IMPORTANT\*** Whilst every care is taken in the preparation of the information contained in this marketing, LITTLE Real Estate, will not be held liable for any error in typing or information. All information is considered correct at the time of advertising.

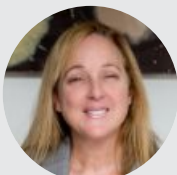
Prior to applying for the property, please ensure any specific requirements have been discussed with your preferred service providers.

### Bond

\$1,521

### Availability

Tuesday 30 April



**Maria Nicholas**

*Property Manager, VIC*

maria.nicholas@little.com.au  
0482 860 892



**Danny Campos**

*Leasing Consultant, VIC*

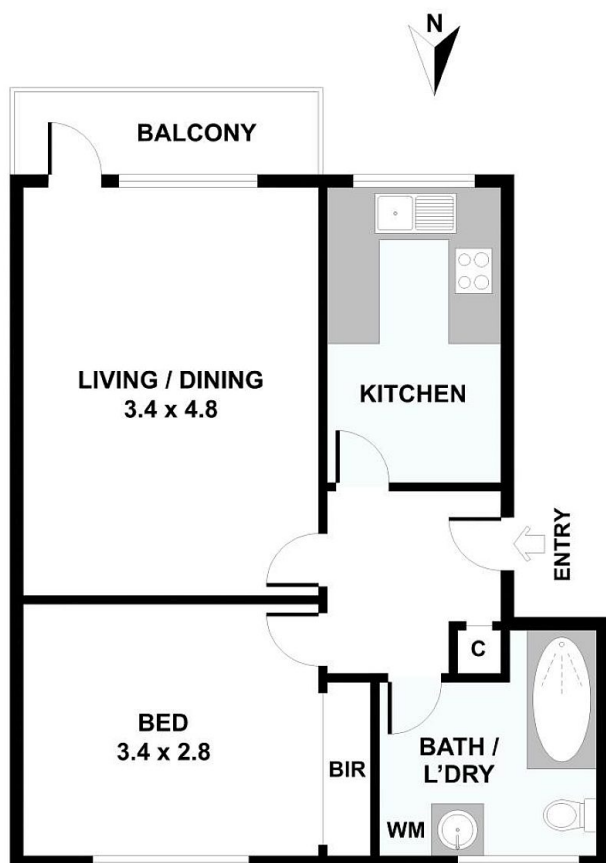
danny.campos@little.com.au  
0456 594 589

**\$350 a week** |  1  1  1

 16/51 Chapel Street St Kilda VIC



## 16/51 Chapel Street, St Kilda



Please note: All stated dimensions are approximate only. Particulars given are for general information only and do not constitute any representation on the part of the vendor or agent.

