

\$270 a week |  S  1  1

 25/22-28 Canterbury Street Flemington VIC



\$270 a week

🛏 S 🚶 1 🚗 1



📍 25/22-28 Canterbury Street Flemington VIC

Convenient and Affordable

Bed-sit apartment situated only minutes to CBD, transport, shops and racecourse. Ideal for students and single people looking for low cost simple living.

Features include:

- Kitchenette with portable electric cooktop
- Separate bathroom with shower
- Sunny combined bedroom-lounge
- Single off street parking
- Communal laundry
- Would suit those requiring affordable living close to the city.

Arranging an inspection is easy.

To book a time to inspect, simply click on 'Email Agent' to arrange. By registering, you will be instantly informed of any updates, changes or cancellations for your appointment.

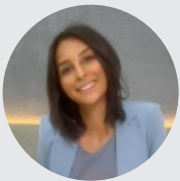
The fastest and easiest way to apply for this property is through 1Form using the Apply Online feature, you will need to an application code to apply, supplied after you have inspected the property.

Bond

\$1,173

Availability

Monday 29 April



Amira Khatoun

Leasing Consultant, VIC

amira.khatoun@little.com.au

0400 857 606

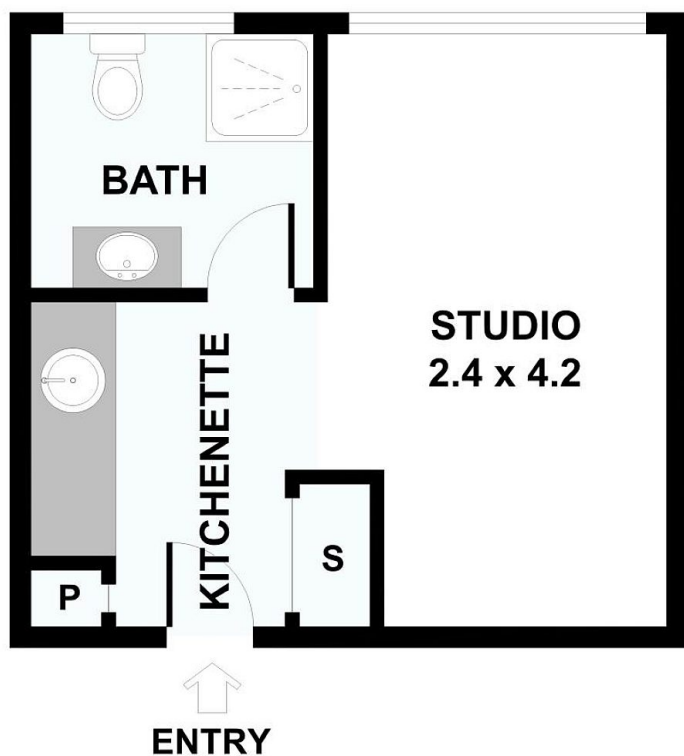
\$270 a week

S 1 1



25/22-28 Canterbury Street Flemington VIC

25/22-28 Canterbury Street, Flemington



Please note: All stated dimensions are approximate only. Particulars given are for general information only and do not constitute any representation on the part of the vendor or agent.

