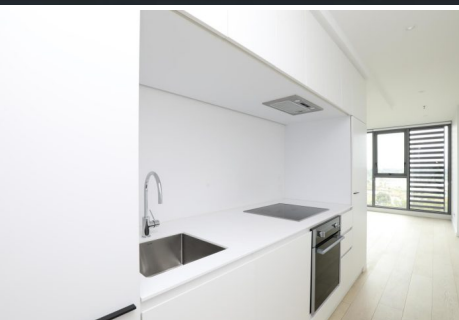


**\$470 a week** |  1  1

 1414/1 Ascot Vale Road Flemington VIC



**\$470 a week**

1 1



1414/1 Ascot Vale Road Flemington VIC

## Modern one bedroom apartment

Positioned for absolute convenience, close to trams and Newmarket Station, Newmarket Village cafes and shops, Showgrounds and Flemington Racecourse. On offer is this one bedroom apartment located in the spectacular ONLY Flemington apartments provide generous floorspace and an abundance of storage.

ONLY Flemington offers stunning contemporary apartments in a world class location opposite the renowned Flemington Racecourse. The sculptured 22-storey tower has three highly detailed facades, creating a distinct impression when viewed from any angle. With incredible views overlooking Flemington Racecourse, the podium is crowned by an exclusive entertainment deck where residents can host guests in private social pods. Level nineteen offers outdoor lap pool, gym, BBQ and garden terrace. Whilst level three provides games room and four entertainment pods available for booking.

- Stylish open plan kitchen with stone benchtops and Baumatic appliances
- Bathroom with European Laundry
- Private balcony
- Secure basement carpark with storage cage
- Security building with video intercom, grand entrance lobby with concierge
- Fully-equipped gymnasium and sundeck overlooking stunning heated swimming pool
- The number 57 tram at the doorstep, short walk to Newmarket station and numerous cafes and restaurants

Please book an inspection time or contact the agent if you would like to inspect this property.

By registering for an inspection, you will be instantly informed of any updates, changes or cancellations for your appointment.

### Bond

\$2,042

### Availability

Tuesday 16 April



### Cooper Modica

*Leasing Consultant, VIC*

cooper.modica@little.com.au  
0458 516 649