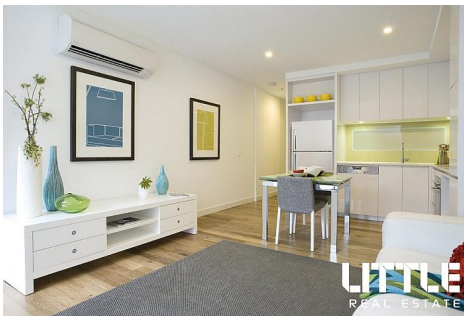


\$390,000 - \$420,000

1 1

401/101 Bay Street PORT MELBOURNE VIC



\$390,000 - \$420,000

🛏 1 🚿 1



📍 401/101 Bay Street PORT MELBOURNE VIC

The Heart Of Port Melbourne

This stylish apartment will be the one that satisfies many demands. This is perfect for someone seeking a low maintenance lifestyle, city pad, or a handy addition to your investment portfolio.

The interior is well appointed with timber flooring. An open plan living/dining flows seamlessly onto a private balcony. A gourmet meal could be whipped up in the stone topped kitchen, equipped with Miele appliances.

A good sized bedroom has ample built in storage, additionally the fully tiled bathroom is modern, with touches of stone and glass, for an extra touch of luxury.

The Close by.

Located in the heart of Port Melbourne, with everything you could possibly need at your finger tips, but a short stroll from the beach and trams to CBD.

Call or email today to inspect.

Disclaimer:

Little Real Estate has not independently checked any of the information we merely pass on. We make no comment on and give no warranty as to the accuracy of the information contained in this document which does not constitute all or any part of any offer or contract by the recipient. Prospective purchasers must rely on their own enquiries and should satisfy themselves as to the truth or accuracy of all information given by their own inspections, searches, inquiries, advices or as is otherwise necessary. No duty of care is assumed by Little Real Estate toward the recipient with regard to the use of this information and all information given is given without responsibility.



Janice Harmon

Sales Consultant, VIC

janice.harmon@little.com.au

0438 600 217

\$390,000 - \$420,000

1 1

401/101 Bay Street PORT MELBOURNE VIC

