

**\$370,000 - \$400,000** | 2 1

3305/58 Clarke Street SOUTHBANK VIC



**\$370,000 - \$400,000** |  2  1

 3305/58 Clarke Street SOUTHBANK VIC



---

## Luxe Abode with Stunning Views

This two bed apartment will appeal to you as soon as you walk through the front door.

The boutique finishes, unparalleled views, in a space bathed in natural light, is a real winner.

Oak floor boards that flow throughout the apartment offer modernity and ease of maintenance.

The kitchen has stone bench tops, glass splashback, quality stainless appliances, integrated into timber accented cabinets.

A study nook is also cleverly incorporated next to the kitchen, offering that all important work from home/study space.

Adjacent to the kitchen is the living/dining. A generous space to enjoy the spectacular views from, the ceiling to floor glass offers unimpeded views across the skyline.

Both bedrooms have natural light, are of ample size, with built in storage. Finally a good sized, fully tiled central bathroom tops off this apartment.

If that wasn't enough you also have access to a roof top terrace, BBQ area and cinema.

If you want to blend luxury with convenience, pop out the front door for trams to the CBD, Clarendon street, a short stroll to the Casino and south Melbourne Market.

Reach out for a private appointment.

### Disclaimer:

Little Real Estate has not independently checked any of the information we merely pass on. We make no comment on and give no warranty as to the accuracy of the information contained in this document which does not constitute all or any part of any offer or contract by the recipient.

Prospective purchasers must rely on their own enquiries and should satisfy themselves as to the truth or accuracy of all information given by their own inspections, searches, inquiries, advices or as is otherwise necessary. No duty of care is assumed by Little Real Estate toward the recipient with regard to the use of this information and all information given is given without responsibility.

**\$370,000 - \$400,000** |  2  1

 3305/58 Clarke Street SOUTHBANK VIC



**Janice Harmon**

*Sales Consultant, VIC*

janice.harmon@little.com.au

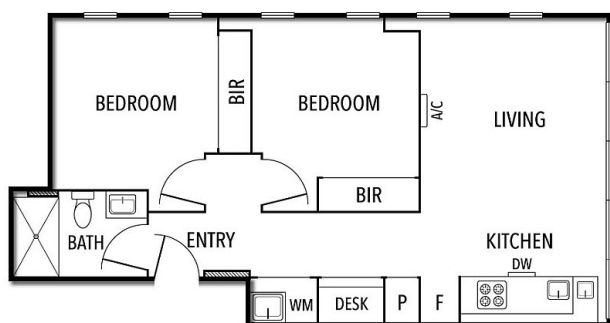
0438 600 217

**\$370,000 - \$400,000** | 2 1

3305/58 Clarke Street SOUTHBANK VIC



3305/58 CLARKE STREET, SOUTHBANK



THE ABOVE PLAN IS AN ARTIST'S IMPRESSION ONLY. IT INCLUDES ELEMENTS THAT ARE FOR DISPLAY PURPOSES ONLY AND MAY NOT BE TO SCALE.  
LANDSCAPING SHOWN IS INDICATIVE ONLY. DIMENSIONS ARE APPROXIMATE.