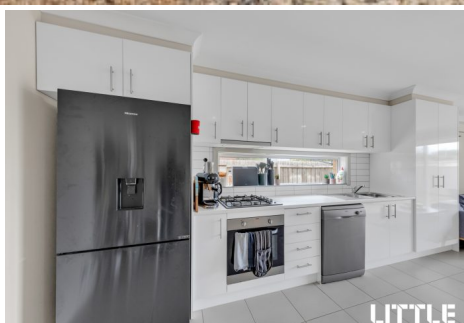


\$475,000 - \$500,000

4 2 2

13 Gina Court KILMORE VIC



\$475,000 - \$500,000

|  4  2  2



 13 Gina Court KILMORE VIC

Four Bedroom Plus Study

A practical layout with four bedrooms plus study, two bathrooms, separate toilet, separate laundry. North facing open plan kitchen/living/dining area at the back of the house overlooks a big backyard. Designated study at the front of the house is ideal for those working from home. Plenty of storage space with built in wardrobes to all bedrooms and cupboards to hallway.

Secure lock up garage has roller door access into hallway. Very tidy and low maintenance front and rear yards. Conveniently situated in a quiet street of a tranquil neighbourhood near parks, schools and shopping. Access to all the amenities and infrastructure of Kilmore.

- Master bedroom with ensuite and walk-in-robe.
- Carpet to all bedrooms.
- Split system a/c to main living area.
- Lock up garage.
- Low maintenance.

For more information, please contact Hardy Singh.

1. Kilmore Golf Club.

18 hole golf course with undulating and scenic fairways.

2. Ryan's Creek Reserve.

Parkland reserve with childrens playground, walking and cycling paths.

3. Kilmore Community Centre.

Facilities are available for meetings, group activities and community events.

Disclaimer:

Little Real Estate has not independently checked any of the information we merely pass on. We make no comment on and give no warranty as to the accuracy of the information contained in this document which does not constitute all or any part of any offer or contract by the recipient.

Prospective purchasers must rely on their own enquiries and should satisfy themselves as to the truth or accuracy of all information given by their own inspections, searches, inquiries, advices or as is otherwise necessary. No duty of care is assumed by Little Real Estate toward the recipient with regard to the use of this information and all information given is given without responsibility.

\$475,000 - \$500,000

4

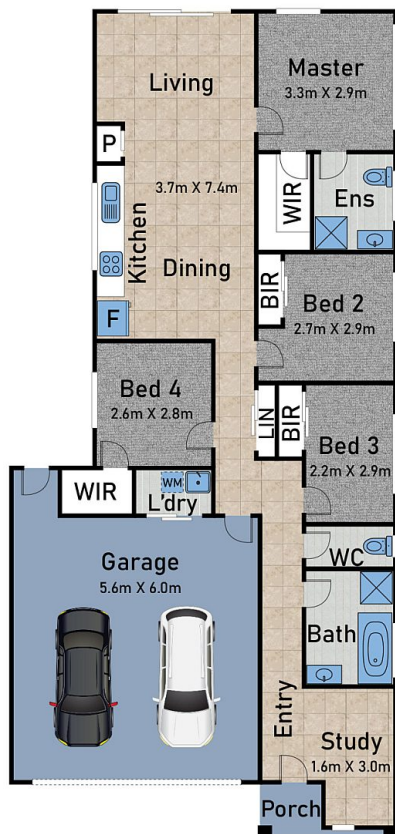
2

2

13 Gina Court KILMORE VIC



Floor Plan



The site plan and floor plan are not to scale. Measurements are indicative and in meters.
Bushes and Trees are placed for illustration Purpose only.
Prepared by www.auzgaller.com.au



13 Gina Court Kilmore

LITTLE
REAL ESTATE