

**\$795,000 to \$850,000** | 🏠 2 🚗 2

📍 408/101 Bay Street PORT MELBOURNE VIC



**\$795,000 to \$850,000**

2 2



408/101 Bay Street PORT MELBOURNE VIC

## Perfection In Port Melbourne

Here is your chance to purchase at 101 Bay Street . This two bed, two bath apartment will not disappoint, and is a definite lifestyle choice. Approximately 90m2 with sweeping views, it ticks every box.

A fully fitted out kitchen includes quality s/steel appliances, complimented by stone bench tops and island, perfect for entertaining.

The kitchen/dining/ living has a real sense of space, engineered timber flooring graces this area. The natural light is amazing due to the amount of windows, as are the vast views of the CBD.

Both bedrooms are of a good size. The master is also ensuite with a dressing room area.

A large, modern bathroom services the rest of the apartment. Add to this an entrance hall lined with valuable storage.

Secure car park and storage cage.

The Close By.

Cafes, restaurants, supermarkets, in fact everything that you will need is literally at your front door.

The beach is only a short stroll away, approx. one and a half blocks.

### Disclaimer:

Little Real Estate has not independently checked any of the information we merely pass on. We make no comment on and give no warranty as to the accuracy of the information contained in this document which does not constitute all or any part of any offer or contract by the recipient.

Prospective purchasers must rely on their own enquiries and should satisfy themselves as to the truth or accuracy of all information given by their own inspections, searches, inquiries, advices or as is otherwise necessary. No duty of care is assumed by Little Real Estate toward the recipient with regard to the use of this information and all information given is given without responsibility.



**Janice Harmon**

*Sales Consultant, VIC*

janice.harmon@little.com.au

0438 600 217

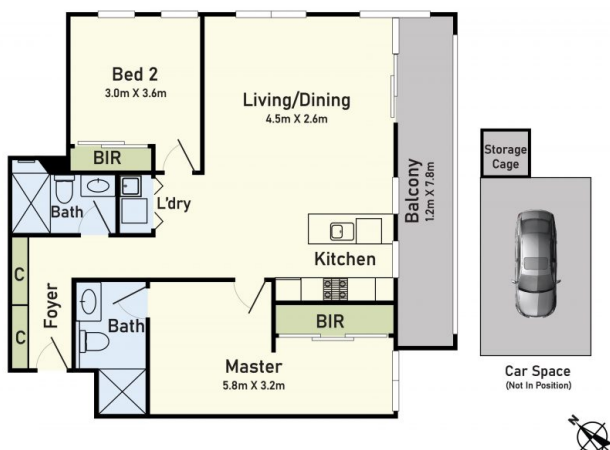
**\$795,000 to \$850,000**

2 2



408/101 Bay Street PORT MELBOURNE VIC

### Floor Plan



408/101 Bay Street, Port Melbourne, VIC 3207

\* Dimensions are approximate and for illustrative purposes only