

**\$690,000 - \$730,000** |  4  2  2

 7 Partridge Way POINT COOK VIC



**\$690,000 - \$730,000**



4



2



2



📍 7 Partridge Way POINT COOK VIC

## Vendor must sell!

- Year Built 2015
- Rental appraisal \$500-\$520
- Council Rates \$2,070 p.a.
- Frontage 12.5m
- Depth 30m
- No easements
- Saltwater P-9 College
- Homestead Senior Secondary College

Welcome to 7 Partridge Way, Point Cook! This stunning 4-bedroom, 2-bathroom house is the perfect family home. With a spacious land area of 375 sqm, there is plenty of room for everyone to enjoy.

Step inside and be greeted by a stylish interior design that exudes modern elegance. The open floor plan seamlessly connects the living, dining, and kitchen areas, creating a perfect space for entertaining guests or spending quality time with family.

The kitchen is a chef's dream, featuring sleek cabinetry, high-quality appliances, and ample storage space. The sliding doors in the living area open up to a beautifully landscaped backyard, providing a seamless transition between indoor and outdoor living.

The bedrooms are generously sized and filled with natural light, creating a warm and inviting atmosphere. The master bedroom boasts an ensuite bathroom, offering privacy and convenience.

With a double garage, there is plenty of space for parking and storage. The corner location of the property adds an extra touch of exclusivity and provides additional privacy.

Located in the sought-after suburb of Point Cook, this property offers easy access to a range of amenities including schools, parks, shopping centers, and public transport. The price guide for this property is \$690,000 - \$730,000, making it an excellent opportunity for both homeowners and investors.

Don't miss out on the chance to make this beautiful house your new home. Contact us today to arrange a private inspection or to receive more information about this property.



**Ashwin Sharma**

*Sales Consultant - Licensed Estate Agent, VIC*

ashwin.sharma@little.com.au

0420 599 757

**\$690,000 - \$730,000** |  4  2  2

 7 Partridge Way POINT COOK VIC

---



**\$690,000 - \$730,000**

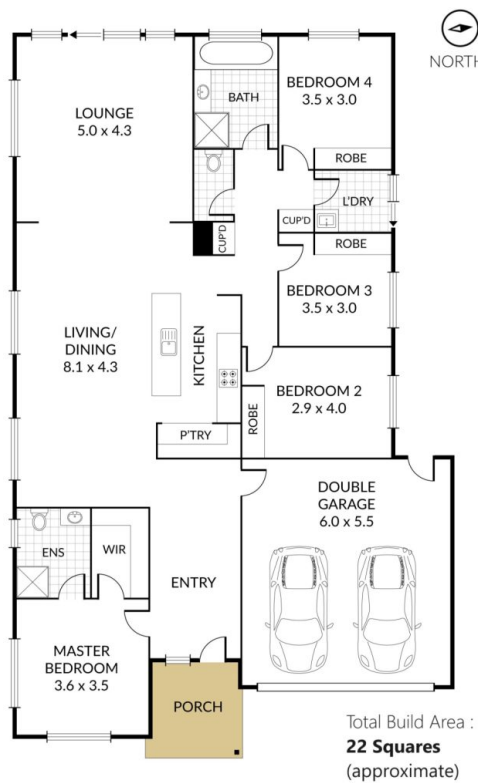
4

2

2



7 Partridge Way POINT COOK VIC



NOTE: Every precaution has been taken to verify the accuracy of the above details. However, prospective purchasers are advised to make their own enquiries.