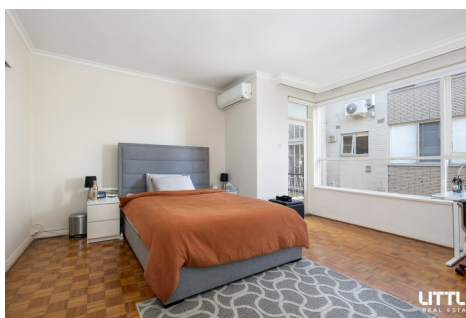


\$490,000 - \$539,000 | 2 1

4/7 Celeste Court ST KILDA EAST VIC



**\$490,000 - \$539,000**

2 1



4/7 Celeste Court ST KILDA EAST VIC

## Sunlit, serene, spacious

Elevated to perfection on the first floor of a boutique low-rise complex, this impressive 2 bedroom, 2 balcony apartment offers surprising space, an abundance of natural light and a serene cul-de-sac setting.

Stretch out in the spacious and air-conditioned environs of a sunlit living room with rich timber parquet flooring underfoot. A separate kitchen is graced with room for dining, a tiled splashback and ample bench and storage space.

Ideal for alfresco relaxation, step outside to your choice of balcony, one via the living room and the other from the kitchen. The tranquillity of this whole package is a rare find!

- 2 large and bright bedrooms with floor-to-ceiling built-in robes
- Original bathroom with a bath, separate shower and mirrored cabinetry
- Laundry capability
- Separate WC
- Split-system heating and cooling plus panel heating
- Roller blinds
- Intercom entry
- Well-maintained block of just eight apartments

Zoned to the prized Windsor Primary School, venture downstairs and walk to Orrong Road shopping, Woolworths, the 604 bus to Chapel Street, leading schools, cafes, Alma Park and Dandenong Road trams. A market entry certainty or a portfolio high-performer, this is unrivalled living. Inspect with certainty!

For more information, please contact Shawn White today.

### 3 x LITTLE THINGS WE LOVE

1. Woolworths Orrong Road  
Footsteps from your weekly shop
2. Dandenong Road  
Moments from city-bound trams
3. Windsor Primary School  
In the zone for this popular choice

#### Disclaimer:

Little Real Estate has not independently checked any of the information we merely pass on. We make no comment on and give no warranty as to the accuracy of the information contained in this document which does not constitute all or any part of any offer or contract by the recipient. Prospective purchasers must rely on their own enquiries and should satisfy themselves as to the truth or accuracy of all information given by their own inspections, searches, inquiries, advices or as is otherwise necessary. No duty of care is assumed by Little Real Estate toward the recipient with regard to the use of this information and all information given is given without responsibility.

**\$490,000 - \$539,000**

|  2  1

 4/7 Celeste Court ST KILDA EAST VIC



**Shawn White**

*State Sales Leader - Licensed Estate Agent, VIC*

shawn.white@little.com.au

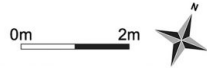
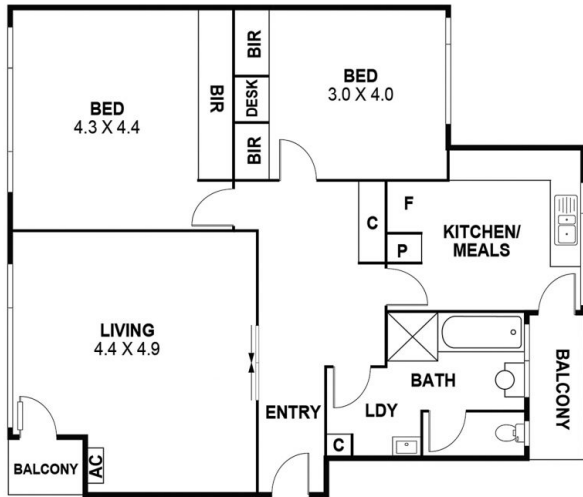
0425 335 034

\$490,000 - \$539,000

2 1



4/7 Celeste Court ST KILDA EAST VIC



This floor plan is intended as a guide only. Layout dimension are approximate only.  
No representations or warranties of any nature whatsoever are given or intended.  
Any person using this information should rely on their own enquiries.