

\$785,000 - \$815,000

🛏 2 🚿 2 🚗 1

📍 1305/139 Queensberry Street CARLTON VIC



\$785,000 - \$815,000

|  2  2  1



 1305/139 Queensberry Street CARLTON VIC

A real sense of space!

Set to inspire in a commanding corner setting, this impressive 2-bedroom, 2-bathroom apartment is the perfect match for market entrants, investors, professional couples and individuals on the lookout for an inner-city base with a touch of class.

Perfectly positioned on the 13th floor of the luxury-led Eminence complex, wide-reaching open-plan living/dining makes a seamless connection with an undercover balcony boasting panoramic neighbourhood views as far as the eye can see.

Cook up a storm in an ultra-stylish kitchen with chic stone surfaces, a waterfall-edged island bench, concealed fridge space and the full suite of premium Miele appliances including an integrated dishwasher and a 900mm gas cooktop.

- 2 large bedrooms with mirrored BIR, main with deluxe ensuite and balcony access
- Sleek bathroom with floor-to-ceiling tiles, a rainfall/hand-held shower and mirrored cabinetry
- Secure undercover parking and a storage cage
- Large, concealed laundry with a sink and storage
- Ducted heating and cooling
- Double glazing
- Roller blinds and recessed down-lighting
- Lightly toned timber floorboards and durable carpet
- Intercom entry and lift access
- Concierge service
- Rooftop lounge/kitchen/dining area and an alfresco BBQ terrace with breathtaking views

Venture downstairs and the best of Melbourne can be accessed from your doorstep. Take an easy stroll to the CBD, Queen Victoria Market, RMIT, Melbourne University, the hospitals precinct, transport choice, Carlton Gardens and a feast of restaurants, cafes, and bars. This is the one!

For more information, please contact Ange Lagogiannis today on 0477 007 908.

Disclaimer:

Little Real Estate has not independently checked any of the information we merely pass on. We make no comment on and give no warranty as to the accuracy of the information contained in this document which does not constitute all or any part of any offer or contract by the recipient. Prospective purchasers must rely on their own enquiries and should satisfy themselves as to the truth or accuracy of all information given by their own inspections, searches, inquiries, advices or as is otherwise necessary. No duty of care is assumed by Little Real Estate toward the recipient with regard to the use of this information and all information given is given without responsibility

\$785,000 - \$815,000

🛏 2 🛏 2 🚗 1



📍 1305/139 Queensberry Street CARLTON VIC



Ange Lagogiannis

Sales Consultant, VIC

ange.lagogiannis@little.com.au
0477 007 908



Janice Harmon

Sales Consultant, VIC

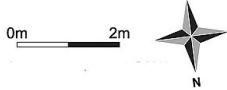
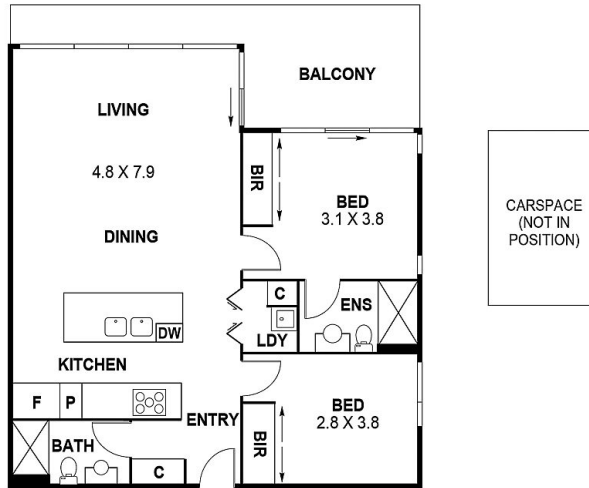
janice.harmon@little.com.au
0438 600 217

\$785,000 - \$815,000

2 2 1



1305/139 Queensberry Street CARLTON VIC



This floor plan is intended as a guide only. Layout dimension are approximate only.
No representations or warranties of any nature whatsoever are given or intended.
Any person using this information should rely on their own enquiries.