

\$525,000 |  2  1  1

 105/17 Riversdale Road HAWTHORN VIC



\$525,000

2 1 1



105/17 Riversdale Road HAWTHORN VIC

North facing and stylish

Here at the river-end of Hawthorn with city trams outside, Glenferrie Rd shopping to the east and Richmond dining out options just over the Yarra, this apartment is the quintessential urban lifestyle haven. Privately positioned on the 1st floor at the very rear of striking 'One/Seven', this tranquil apartment reveals premium quality finishes throughout. Miele appliances are the outstanding choice in the stylish kitchen linked to the sunny living area by a stone island bench. A wall of glass slides open to the full-width north-facing entertainment terrace where leafy treetops are on view. 2 carpeted bedrooms (main with BIRs) surround the bathroom/laundry whilst video intercom, heating/cooling, basement parking and lift access conclude an impeccable lock-up-and-leave base or canny addition to the property portfolio with easy access to cosmopolitan shopping, Swinburne Uni, public transport, river parklands and excellent schools.



Shawn White

State Sales Leader - Licensed Estate Agent, VIC

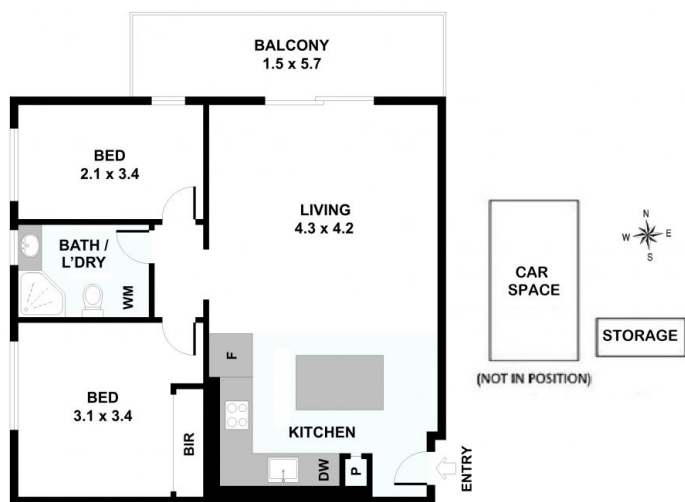
shawn.white@little.com.au
0425 335 034

\$525,000

2 1 1



105/17 Riversdale Road HAWTHORN VIC



Please note: All stated dimensions are approximate only. Particulars given are for general information only and do not constitute any representation on the part of the vendor or agent.