

## Contact Agent

🛏 2 🚿 1 🚗 1

📍 506/443 Upper Heidelberg Road IVANHOE VIC



## Contact Agent

🛏 2 🚿 1 🚗 1



📍 506/443 Upper Heidelberg Road IVANHOE VIC

### Idyllic designer retreat

**\*\*IMPORTANT NOTICE: CHECK IN VIA QR CODE AND PROOF OF FULL VACCINATION STATUS REQUIRED PRIOR TO ENTRY FOR ANY ATTENDEES OF OPEN FOR INSPECTIONS AND AUCTIONS.**

PRIVATE INSPECTIONS CAN ALSO BE ARRANGED IF YOU PREFER TO VIEW OUTSIDE OF THE ADVERTISED TIME, OR YOU DO NOT WISH TO DISCLOSE YOUR VACCINATION STATUS\*\*

Impeccably stylish with architect-designed detail by world-renowned Fender Katsalidis, this high-quality two bedroom apartment takes prime position with commanding views sweeping towards the stunning city skyline.

Set on the 5th floor of the celebrated Ivanhoe Apartments complex, discover a stone-finished kitchen with a waterfall-edged breakfast bar and premium stainless-steel appliances, including an easy-clean induction cooktop and a full-sized dishwasher.

Open-plan living/dining makes the most of a breathtaking outlook and a uniquely curved facade, seamlessly connecting with an undercover balcony, the perfect perch to enjoy an after-work drink, a magical sunset or entertaining with a panoramic city backdrop.

- two spacious and bright bedrooms with built-in robes, one with a city vista, the other with views extending towards the Dandenong Ranges
- Luxurious, tiled bathroom with a sparkling walk-in shower and ample storage
- Concealed laundry
- Inviting hallway entrance
- Split-system heating and cooling in every room
- Double glazing and roller blinds
- Substantial storage solutions
- Character-rich floorboards in entry, kitchen and living
- Undercover parking with a storage cage
- Secure video intercom entry and lift access
- Resort-inspired facilities include a pool, fully equipped gym, and residents' kitchen/lounge/dining

Located approximately 10km from the CBD, this is an address of true convenience. Enjoy easy access to local hospitals, leading schools, shopping and transport choice, Burgundy Street cafes, Yarra River parkland, and the city-bound Eastern Freeway.

For more information, please contact Andrew Car today.

Contact Agent

2 1 1



506/443 Upper Heidelberg Road IVANHOE VIC



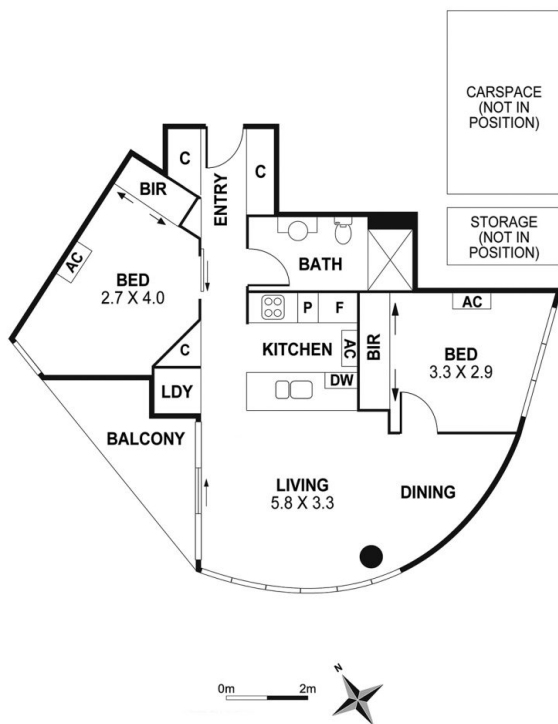
**Shawn White**  
*State Sales Leader - Licensed Estate Agent, VIC*  
shawn.white@little.com.au  
0425 335 034

## Contact Agent

2 1 1



506/443 Upper Heidelberg Road IVANHOE VIC



This floor plan is intended as a guide only. Layout dimension are approximate only.  
No representations or warranties of any nature whatsoever are given or intended.  
Any person using this information should rely on their own enquiries.