

**\$899,000**



3



2



2

📍 210/443 Upper Heidelberg Road IVANHOE VIC



**\$899,000**



3



2



2



📍 210/443 Upper Heidelberg Road IVANHOE VIC

## Resort-style excellence!

A spectacular celebration of impeccable indoor/outdoor space, this designer 3 bedroom, 2 bathroom retreat is designed for entertaining not maintaining.

Discover roomy open-plan living/dining, and a stone-topped kitchen with high-quality appliances including a dishwasher and a waterfall-edged breakfast bar.

Framed by full-height glass, enjoy a covered balcony with commanding neighbourhood views to the north sweeping over local treetops and rooftops.

- \* Designed by award-winning Fender Katsalidis
- \* 3 large bedrooms with built-in robes, main with private ensuite
- \* Luxurious, fully tiled bathroom and a concealed laundry
- \* Split-system heating/cooling, roller blinds, double glazing, sleek timber flooring
- \* Secure video intercom entry and lift access
- \* Basement parking for 2 cars plus storage cage
- \* First-class resort-style facilities include pool, gym, and residents' kitchen/lounge/dining

Take full advantage of easy access to Austin Hospital, a range of leading schools, shopping, lively cafes, transport options, and the Eastern Freeway.

For more information, please contact Shawn White today.



### **Shawn White**

*State Sales Leader - Licensed Estate Agent, VIC*

shawn.white@little.com.au  
0425 335 034

**\$899,000**



3

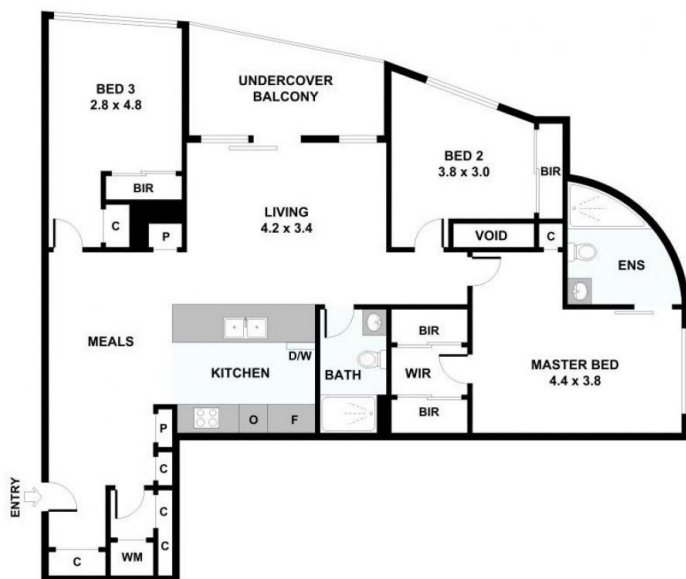


2



2

📍 210/443 Upper Heidelberg Road IVANHOE VIC



Please note: All stated dimensions are approximate only. Particulars given are for general information only and do not constitute any representation on the part of the vendor or agent.

