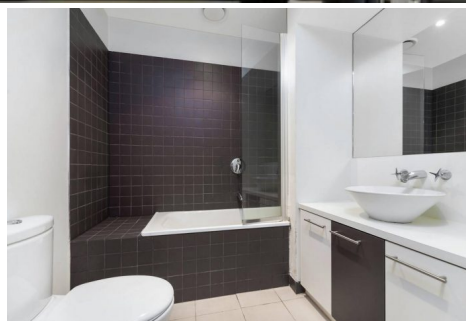
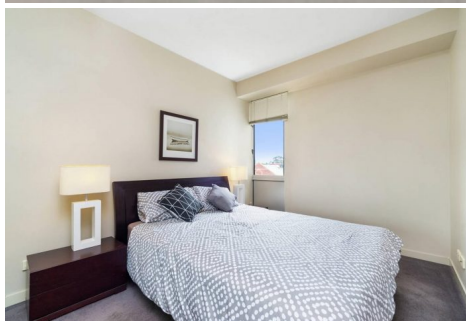


**\$450,000 - \$490,000** |  1  1  1

 213/99 Nott Street Port Melbourne VIC



**\$450,000 - \$490,000**



1



1



1



📍 213/99 Nott Street Port Melbourne VIC

---

## Bayside living on the edge of the city!

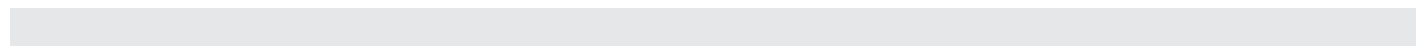
Little Real Estate is taking guidance from the Australian Government and will continue to put in place the necessary measures to protect the community during all upcoming OFIs.

Located in an extremely popular position with the beach just at the end of the street, this stylish one bedroom apartment holds irresistible allure for lifestyle lovers with an eye for a dynamic location.

Featuring:

- One bedroom with built in robes
- Modern bathroom with shower over bath
- Kitchen with plenty of storage and stainless steel appliances
- North facing open living/ dining leading to balcony
- Full-width entertainers balcony
- Reverse cycle heating/ cooling
- Euro laundry facilities
- Security entrance
- Secure basement carpark

Walking distance to the beach and to Bay Street Shopping strip Book an inspection today and don't miss out!



**\$450,000 - \$490,000**



📍 213/99 Nott Street Port Melbourne VIC

