

\$420,000 |  4  2  2

 83 Reedmans Road Ormeau QLD



\$420,000



4



2



2



📍 83 Reedmans Road Ormeau QLD

PERFECT FAMILY HOME – THE BROOKE ESTATE, ORMEAU

‘In order to protect the community and in line with advice received from the World Health Organisation and the Australian Government, all inspections will be conducted by Private Appointment only. Please contact listing agent directly to arrange a suitable time.’

Conveniently located in The Brooke in popular Ormeau. The Brooke is a relatively new area just off the Pacific Highway perfectly situated between the golden sands of the Gold Coast and the big city lights of Brisbane.

This modern house is a great family sized home, on an elevated good size block of land, master built with meticulous detail and effortless usability in mind.

Complete with a modern colour palette it offers 4 Large Bedrooms, master with ensuite, walk in robe and air conditioner; a spacious kitchen incorporating ample bench and cupboard space, stainless steel appliances including a dishwasher and overlooking the living area.

Either as an investor or an owner occupier, if you are looking for the perfect family home that caters for everyone's needs then this may just be the right home for your family. Positioned on an easy care elevated fully fenced 454m2 block with a great backyard for kids to play and/or pets to run around.

Currently tenanted at \$430.00 per week until 02/04/2020.

PROPERTY FEATURES

- Four large bedrooms with built in wardrobes
- Master bedroom with ensuite
- Large open plan living and dining with tiled floors
- Ultra-modern designer kitchen with sleek bench tops
- Stainless Steel appliances - including dishwasher
- Air Conditioning and fans throughout
- Main bathroom with shower and bath
- Covered patio
- Carpeted bedrooms
- Double lock up, remote control garage
- Fully fenced backyard on large 454m2 block of land
- Large water tank

LOCATION

Schools:

Livingstone Christian College

Ormeau State School

Mother Teresa Primary School

Lutheran Ormeau Rivers District School

Ormeau Woods State High School

\$420,000

4 2 2



83 Reedmans Road Ormeau QLD

Close to the local Ormeau Village Shopping Centre Easy access to the M1 motorway

Please call Tracy on 0402 997 450 for an inspection.



Tracy D'Anna

Sales Consultant, QLD

tracy.d'anna@little.com.au

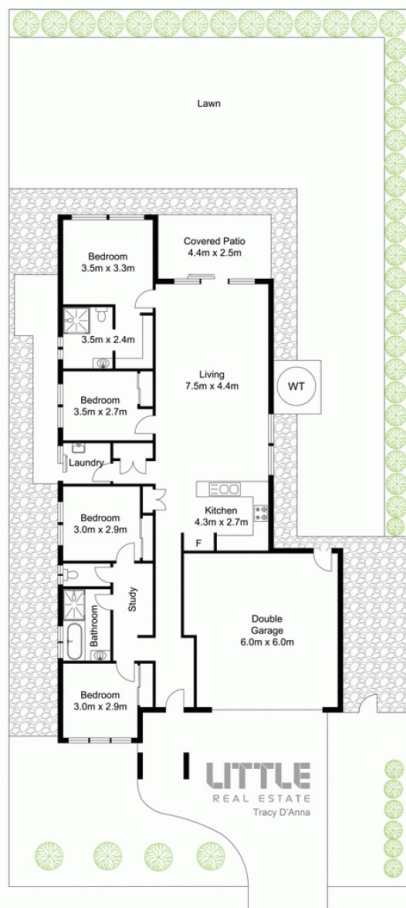
0402 997 450

\$420,000

4 2 2



83 Reedmans Road Ormeau QLD



83 Reedmans Rd, Ormeau
Approximate Floor Area 175 sq. m

Disclaimer: This floor plan has been prepared for illustrative purposes only.
All measurements are approximate, and no responsibility is taken for the accuracy