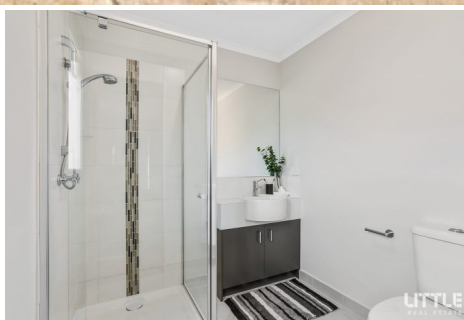


\$520,000

4 2 2

455 McGrath Road Wyndham Vale VIC



\$520,000

4 2 2



455 McGrath Road Wyndham Vale VIC

By The Park

'In order to protect the community and in line with advice received from the World Health Organisation and the Australian Government, all inspections will be conducted by Private Appointment only. Please contact listing agent directly to arrange a suitable time.'

This practical family home is positioned in a quiet and tranquil neighbourhood, right across the street from Presidents Park. It offers four bedrooms, two bathrooms, separate toilet and laundry, double lock up garage with internal access into entry hall, open plan kitchen and living/dining area. All bedrooms with built in wardrobes. Situated near parks, schools, shopping and public transport. Close to Wyndham Vale Train Station

Relax and enjoy the contemporary open plan kitchen and living area. Plenty of natural light makes for easy living in this low maintenance property.

Living area at rear of the house opens to an expansive backyard.

Landscaped front yard with Australian native garden. Porch offers sheltered and well lit access to property.

- Master bedroom with ensuite and walk-in-robe.
- Well equipped kitchen with dishwasher, gas cooktop, stone benchtops.
- Double garage with internal access.
- Big backyard.

Enjoy everything the Wyndham area has to offer. Located within close proximity to primary, secondary and pre-schools. This house is located directly across the street from the giant Presidents Park.

For more information, please contact Ashwin Sharma.



Ashwin Sharma

Sales Consultant - Licensed Estate Agent, VIC

ashwin.sharma@little.com.au

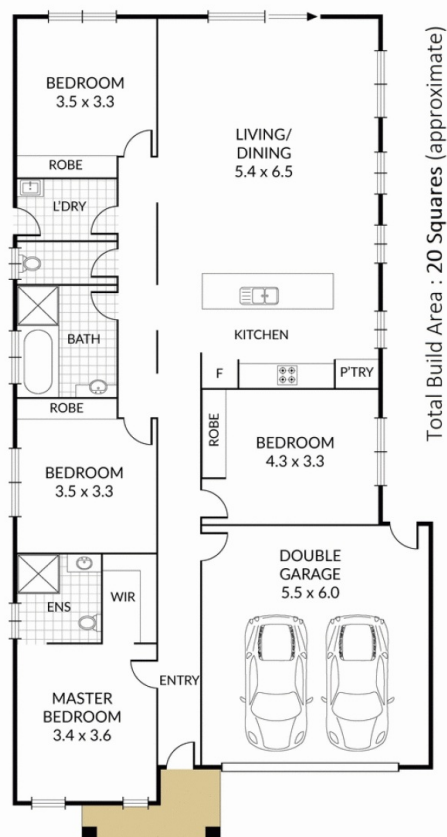
0420 599 757

\$520,000

4 2 2



455 McGrath Road Wyndham Vale VIC



Total Build Area : 20 Squares (approximate)

NOTE: Every precaution has been taken to verify the accuracy of the above details. However, prospective purchasers are advised to make their own enquiries.