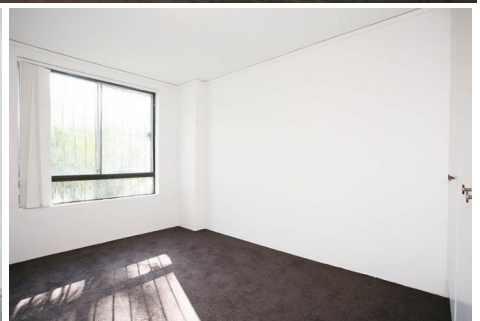
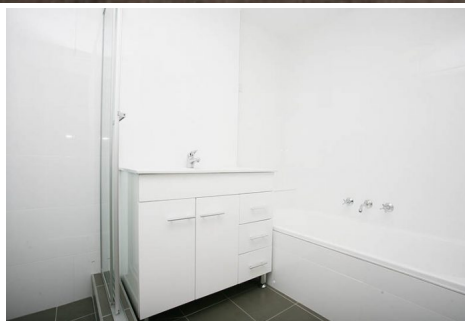


\$690 a week | 🛏️ 2 🚿 1 🚗 1

📍 5/22 Wellington Street BONDI NSW



\$690 a week

🛏 2 🚿 1 🚗 1



📍 5/22 Wellington Street BONDI NSW

Tranquil two bedroom garden apartment with lock up garage

This spacious two bedroom apartment located on the first floor in a well maintained security building with a lift and communal swimming pool. Great central location, easy distance to Bondi Beach and Bondi Junction, very close to Bondi Road shops and transport.

- Updated kitchen with lots of cupboard space and new appliances
- Large combined lounge/dining area
- Lounge room with direct access to private garden great for entertaining
- Modern bathroom with separate shower and bath
- Two double size bedroom, main with built-in
- Spacious internal laundry
- Lock-up garage

Please book an inspection time or contact the agent if you would like to inspect this property.

By registering for an inspection, you will be instantly informed of any updates, changes or cancellations for your appointment.

The fastest and easiest way to apply for this property is through 1Form using the Apply Online feature, you will need to have an application code to apply, which will be supplied after you have inspected the property.

Bond

\$2,760

Availability

Monday 5 August