

**\$400 a week**

2

1

1

12/602 Waverley Road MALVERN EAST VIC



**\$400 a week**

2 1 1



12/602 Waverley Road MALVERN EAST VIC

## Refurbished quiet gem

Freshly painted with brand new carpet this hidden gem is in a little world of its own. Within close proximity to public transport, Monash Freeway, parks and bike paths as well as Gardiners Creek and the Melbourne's own famous shopping centre - Chadstone this won't last long. Comprising of:

- Large open plan dining/living room with rear access to the garage
- Great spaced kitchen with gas cook top and electric oven
- Main bedroom with built in robes, ceiling fan and air-conditioning
- Second bedroom with built in robe and air conditioning
- Separate laundry with external access to rear courtyard
- Large bathroom with separate shower and bath
- Downstairs toilet
- Single lock up garage
- Private courtyard at rear

Arranging an inspection is easy.

To book a time to inspect, simply click on 'Virtual Tour' or 'Email Agent' to arrange.

By registering, you will be instantly informed of any updates, changes or cancellations for your appointment.

### Bond

\$2,000

### Availability

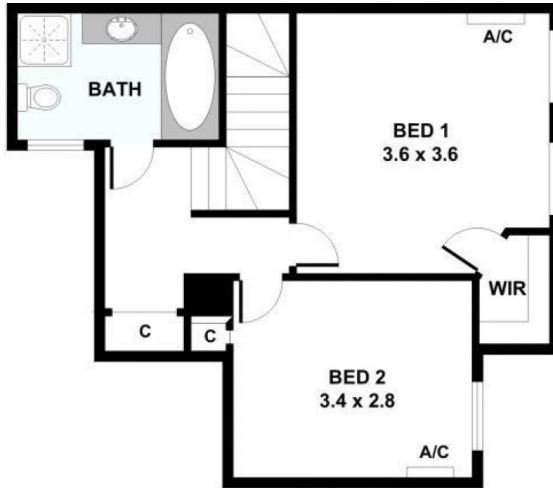
Saturday 6 July

**\$400 a week**

2 1 1



12/602 Waverley Road MALVERN EAST VIC



FIRST FLOOR



GROUND FLOOR