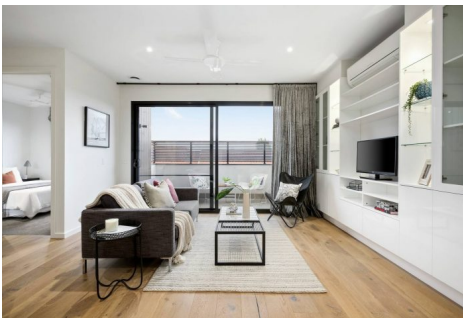


\$575,000



📍 203/15 Manchester Grove Glen Huntly VIC



\$575,000

🛏 2 🚿 2 🚗 1



📍 203/15 Manchester Grove Glen Huntly VIC

Contemporary Stylish Two Bedroom Apartment

Wonderfully underscored by sunlit space, this super-stylish 2 bedroom, 2 bathroom apartment will inspire with superior quality and designer touches.

Set in a boutique complex, spacious open-plan living/dining with integrated cabinetry pivots a stone-topped Smeg kitchen boasting soft-closing cabinetry.

Enjoy a study nook, a commanding balcony with privacy screening, a concealed laundry, split-system heating/cooling, and wide American oak floorboards.

- 2 large bedrooms with mirrored built-in robes, main with fully tiled ensuite
- Luxurious, fully tiled bathroom with bath and stone-topped vanity
- Video intercom entry
- Convenient lift access between secure basement parking and the second floor
- Ceiling fan and recessed down-lighting
- Secure storage cage

Footsteps from Woolworths shopping, walk to local restaurants and cafes, transport choice, Booran Reserve, Glen Huntly Primary School, and Monash University.

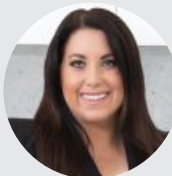
For more information, please contact Spencer Mitchell today.



Spencer Mitchell

Sales Consultant, VIC

spencer.mitchell@little.com.au
0400 111 991



Hannah Richards

Sales Consultant, VIC

0478 084 505

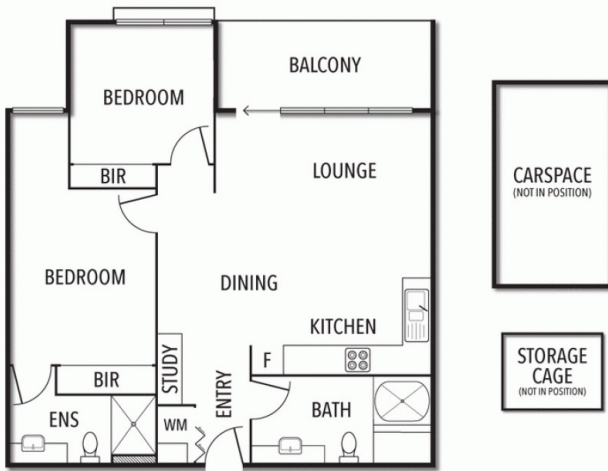
\$575,000

2 2 1



203/15 Manchester Grove Glen Huntly VIC

203/15 MANCHESTER GROVE, GLEN HUNTLY



THE ABOVE PLAN IS AN ARTIST'S IMPRESSION ONLY. IT INCLUDES ELEMENTS THAT ARE FOR DISPLAY PURPOSES ONLY AND MAY NOT BE TO SCALE. LANDSCAPING SHOWN IS INDICATIVE ONLY. DIMENSIONS ARE APPROXIMATE.