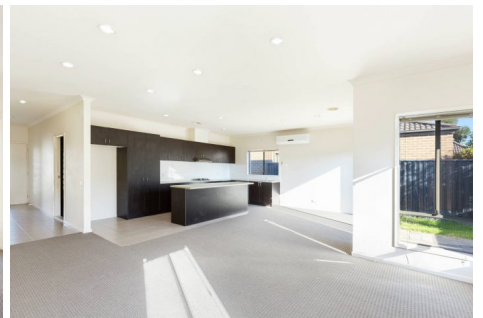


\$430,000



📍 6 Sepal Lane Pakenham VIC



\$430,000

3

2

2

6 Sepal Lane Pakenham VIC



Stylish Lakeside living

Peacefully positioned with instantly inviting parkland almost on your doorstep, live the life you love in this surprisingly spacious 3 bedroom, 2 bathroom home.

In a family-focused neighbourhood, discover roomy open-plan living/dining, and a high-quality kitchen with a sleek island bench and stainless-steel appliances.

Enjoy soaring ceilings, a north-facing rear with a paved patio, a low maintenance, landscaped garden, and a remote-controlled double garage with internal entry.

- * 3 large bedrooms, main with WIR and deluxe ensuite, 2 with BIR
- * Separate WC and concealed laundry
- * Luxurious bathroom with bath and walk-in shower
- * Ducted heating and split-system air conditioning
- * Just a 5 minute walk to the lake
- * Ideal for investors, downsizers, and market entrants

In the Pakenham Lakeside Primary School zone and close to shopping



Eric Lim

Sales Consultant - Licensed Estate Agent, VIC

eric.lim@little.com.au

0420 388 839