

\$580,000 - \$600,000

4

2

2

3 Wolomina Crescent Werribee VIC



\$580,000 - \$600,000

4

2

2



3 Wolomina Crescent Werribee VIC

Quality Metricon build!

A stunning example of inspired modern living, this quality-built 4 bedroom, 2 bathroom Metricon entertainer offers a range of light-filled, family-friendly spaces.

Discover a formal lounge room, open-plan living/dining and a stone-topped kitchen with 900mm stainless-steel appliances, and the luxury of a butler's pantry.

Step outside and entertain in an undercover alfresco, complemented by a low-maintenance garden, and a remote-controlled 2-car garage with internal entry.

- 4 large bedrooms, main with roomy WIR and ensuite (separate WC), 3 with BIR
- Deluxe bathroom with large bath and separate walk-in shower
- Separate laundry and WC
- Ducted heating/cooling, and ceiling fans
- Secure alarm system
- Stylish timber floorboards and high-quality carpet

Perfectly positioned in the popular Harpley Estate, walk to the local childcare and playground with easy access to quality schools, bus transport and shopping.

For more information, please contact Ashwin Sharma today.



Ashwin Sharma

Sales Consultant - Licensed Estate Agent, VIC

ashwin.sharma@little.com.au

0420 599 757

\$580,000 - \$600,000

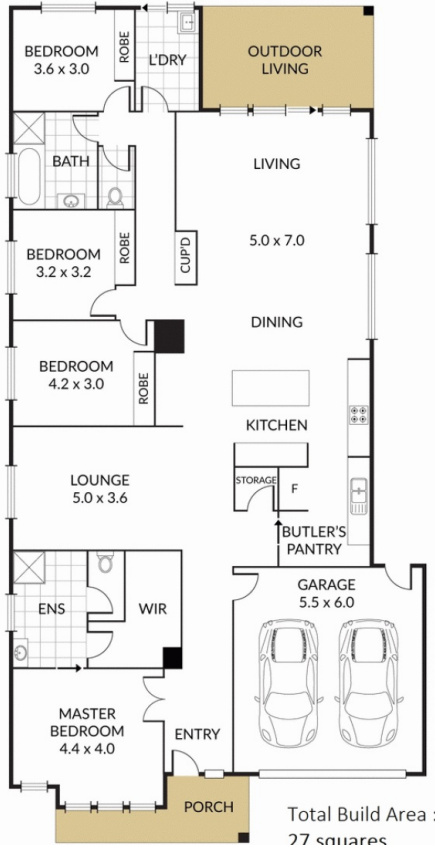
4

2

2



3 Wolomina Crescent Werribee VIC



Total Build Area :
27 squares
(approximate)

NOTE: Every precaution has been taken to verify the accuracy of the above details. However, prospective purchasers are advised to make their own enquiries.