

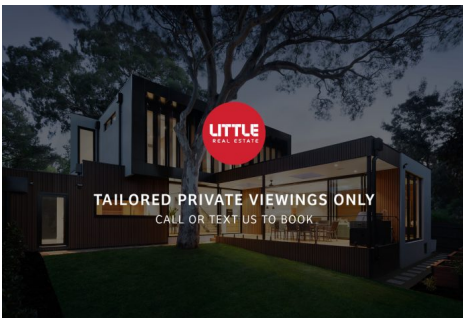
\$700,000 - \$750,000

2

1

1

10/330 Johnston Street ABBOTSFORD VIC



\$700,000 - \$750,000

| 2

1

1



10/330 Johnston Street ABBOTSFORD VIC

\$700,000 - \$750,000

|  2  1  1



 10/330 Johnston Street ABBOTSFORD VIC

Twin-level Indulgence

****INSPECTIONS BY APPOINTMENT ONLY. PLEASE CONTACT ANDREW OR OLIVIA DIRECTLY TO SCHEDULE YOUR OWN PRIVATE VIEWING AT A TIME TO SUIT YOU****

Elevated to appeal in a lifestyle location like no other, this twin-level 2 bedroom apartment accentuates natural light and substantial indoor/outdoor space at every turn.

Set on the first floor of a tranquil low-rise block of just 12 apartments, discover an entire level of light-filled luxury. Enjoy wide-reaching open-plan living and dining underscored by a high-quality Fisher and Paykel kitchen with smooth stone surfaces, a dishwasher, and ample preparation and presentation space.

The impressive amount of alfresco space over both levels is enriched by a ground-floor balcony accessed from each bedroom, and a supersized east-facing terrace on the top floor, ideal for private entertaining and also capturing the warmth of morning sunlight.

- 2 large, robed and sunlit bedrooms, both with balcony, main with WIR and direct bathroom access
- Centrally located, two-way bathroom with a rainfall shower
- Large concealed laundry with a trough and additional storage
- Secure car parking
- Split-system heating and cooling
- Rich timber floorboards
- Recessed down-lighting
- An intimate building of 12 apartments

Positioned to perfection with a host of cafes, bars and restaurants on your doorstep, stroll to Victoria Park trains, local buses, IGA shopping, Yarra River fitness trails and the wide open greenery of Victoria Park.

For more information, please contact Andrew McCalman or Olivia Piccinin today.

Disclaimer:

Little Real Estate has not independently checked any of the information we merely pass on. We make no comment on and give no warranty as to the accuracy of the information contained in this document which does not constitute all or any part of any offer or contract by the recipient.

Prospective purchasers must rely on their own enquiries and should satisfy themselves as to the truth or accuracy of all information given by their own inspections, searches, inquiries, advices or as is otherwise necessary. No duty of care is assumed by Little Real Estate toward the recipient with regard to the use of this information and all information given is given without responsibility.

\$700,000 - \$750,000

| 2

1

1



10/330 Johnston Street ABBOTSFORD VIC



Andrew McCalman

Senior Sales Consultant - Licensed Estate Agent, VIC

andrew.mccalman@little.com.au

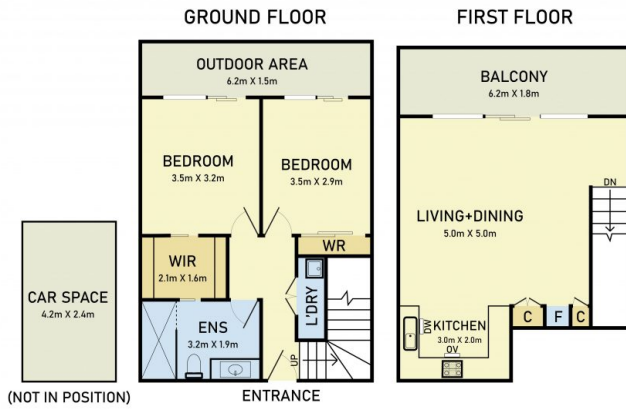
0428 887 165

\$700,000 - \$750,000

2 1 1



10/330 Johnston Street ABBOTSFORD VIC



10/328-330 JOHNSTON STREET ABBOTSFORD

* Dimensions are approximate and for illustrative purposes only

