

\$390,000 - \$420,000

| 🛏 1 🚿 1 🚗 1

📍 705N/229 Toorak Road SOUTH YARRA VIC



\$390,000 - \$420,000

|  1  1  1



 705N/229 Toorak Road SOUTH YARRA VIC

Lifestyle Perfection Large One Bedder

Approximately 50sqm plus balcony. A rare mix of seamless flow, exceptional quality and thoughtful detail in the heart of South Yarra, this immaculate 1 bedroom apartment offers the professional work-from-home advantage of a fitted study area.

Privately placed on the 7th floor of the luxury-led ILK complex, spacious, light-filled and air-conditioned open-plan living and dining is underpinned by a streamlined kitchen boasting a tiled splashback, stone benches and the full complement of premium Miele appliances

Take advantage of an undercover east-facing balcony drenched in morning sunlight, secure parking and world-class resort-inspired amenities including an indoor pool, outdoor sundeck, vast rooftop BBQ terrace, gym, sauna, steam room, indoor/outdoor cinema and shared lounge and dining areas.

- 1 large bedroom with dual built-in robes
- Study area with a built-in desk and storage
- Fully tiled two-way bathroom with a stone-topped vanity and an oversized rainfall shower
- Concealed laundry
- Split-system heating and cooling
- Roller blinds
- Secure intercom entrance and high speed lifts

With fashion-forward Chapel Street so close to your doorstep, stroll to boutique shopping, trams and trains in all directions, Yarra River fitness trails, Woolworths around the corner, and all the cafes, bars and restaurants you love. Embrace low-maintenance luxury with high-impact results!

For more information, please contact Andrew McCalman today.



Andrew McCalman

Senior Sales Consultant - Licensed Estate Agent, VIC

andrew.mccalman@little.com.au

0428 887 165

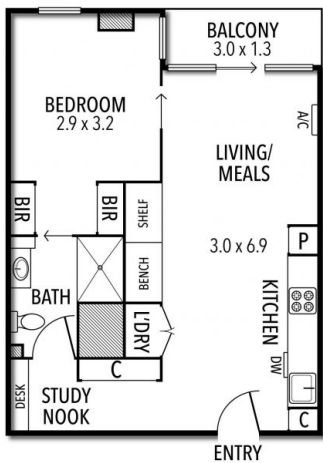
\$390,000 - \$420,000

1 1 1



705N/229 Toorak Road SOUTH YARRA VIC

705N/229 TOORAK ROAD, SOUTH YARRA



THE ABOVE PLAN IS AN ARTIST'S IMPRESSION ONLY. IT INCLUDES ELEMENTS THAT ARE FOR DISPLAY PURPOSES ONLY AND MAY NOT BE TO SCALE. LANDSCAPING SHOWN IS INDICATIVE ONLY. DIMENSIONS ARE APPROXIMATE.