

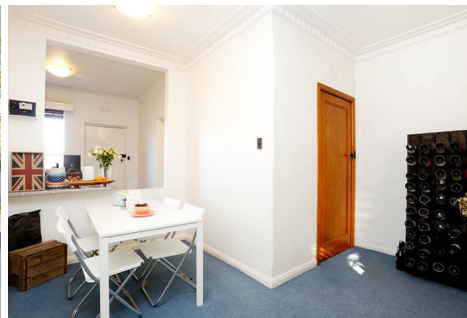
**\$420 a week**

2

1

1

2/3 Henry Street HAWTHORN VIC



**\$420 a week**

🛏 2 🚿 1 🚗 1



📍 2/3 Henry Street HAWTHORN VIC

## Art deco apartment in great location

### Bond

This generous and incredibly well presented refurbished 1930's two bedroom apartment is one of only six and offers fabulous accommodation and location. Only a short distance from Glenferrie train station as well as Glenferrie road shopping strip, this property will meet all of your needs.

\$2,100

Providing:

- Spacious north facing lounge room with decorative open fire place
- Meals area
- Modern kitchen including dishwasher and gas cooking
- Master bedroom with built in robes
- Good sized second bedroom
- Bathroom with washing machine taps
- Security entrance
- Single off street parking

To book a time to inspect, simply click on 'Virtual Tour' or 'Email Agent' to arrange.

By registering, you will be instantly informed of any updates, changes or cancellations for your appointment.

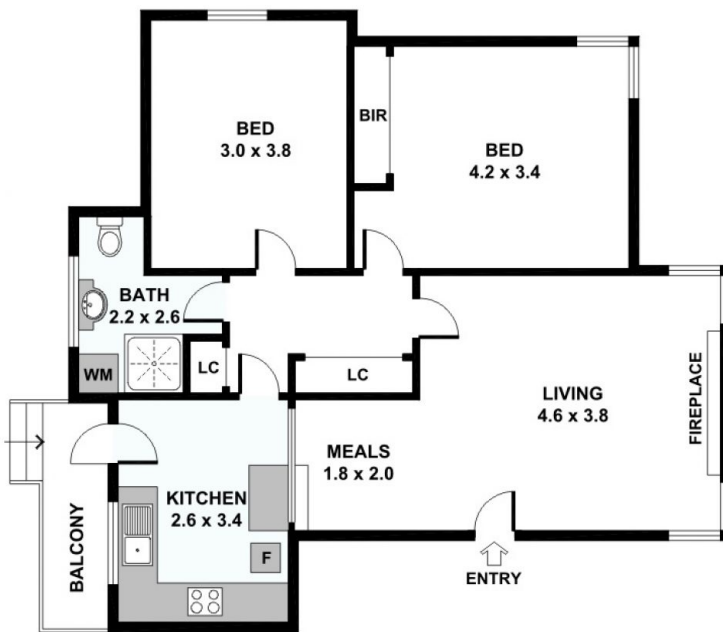
**\$420 a week**

2 1 1



2/3 Henry Street HAWTHORN VIC

### 2/3 Henry Street, Hawthorn



Please note: All stated dimensions are approximate only. Particulars given are for general information only and do not constitute any representation on the part of the vendor or agent.

