

**\$375,000 - \$400,000**

| 🛏 1 🚿 1 🚗 1



📍 601/594 St Kilda Road MELBOURNE VIC



**\$375,000 - \$400,000**



1



1



1



📍 601/594 St Kilda Road MELBOURNE VIC

## A St Kilda Road retreat to cherish

**\*\*IMPORTANT NOTICE: CHECK IN VIA QR CODE AND PROOF OF FULL VACCINATION STATUS REQUIRED PRIOR TO ENTRY FOR ANY ATTENDEES OF OPEN FOR INSPECTIONS AND AUCTIONS.**

PRIVATE INSPECTIONS CAN ALSO BE ARRANGED IF YOU PREFER TO VIEW OUTSIDE OF THE ADVERTISED TIME, OR YOU DO NOT WISH TO DISCLOSE YOUR VACCINATION STATUS\*\*

At the very top end of St Kilda Road giving you stunning access to Albert Park Lake, Fitzroy Street attractions, and St Kilda Beach, this light-filled and well-appointed 1 BR apartment is an impeccable inner city opportunity in the Alto residential complex.

Immaculate from head to toe and saturated in amazing natural light, this 6th floor apartment has a clever layout, with a design that is truly low-maintenance while also giving you plenty of space inside and out.

Quality carpet and floor-to-ceiling windows dominate the bright central living space, which not only has dedicated lounge and dining areas, but further promises access to the balcony which has east glimpses of the tree-lined St Kilda Road.

Along with other outstanding creature comforts, a secure basement car space, and access to Alto facilities including a concierge, indoor pool, gym, and recreation area, this sleek retreat cannot be beaten!

- A dream for first home buyers and savvy investors
- Straight line stone kitchen impresses with Smeg appls
- Enjoy the relaxed bedroom which has BIR storage
- Elegant bathroom comes with Euro laundry facilities
- Reverse cycle heating and cooling, secure intercom

This incredible location also has you so close to iconic Chapel Street shopping, Prahran Market, Albert Park Golf Course, Melbourne Sports and Aquatic Centre, Wesley College, trams to the CBD, and Prahran Station.

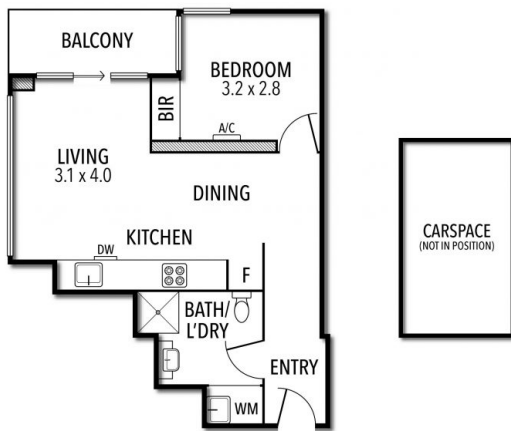
**\$375,000 - \$400,000**

|  1  1  1



📍 601/594 St Kilda Road MELBOURNE VIC

601/594 ST KILDA ROAD, MELBOURNE



THE ABOVE PLAN IS AN ARTIST'S IMPRESSION ONLY. IT INCLUDES ELEMENTS THAT ARE FOR DISPLAY PURPOSES ONLY AND MAY NOT BE TO SCALE. LANDSCAPING SHOWN IS INDICATIVE ONLY. DIMENSIONS ARE APPROXIMATE.