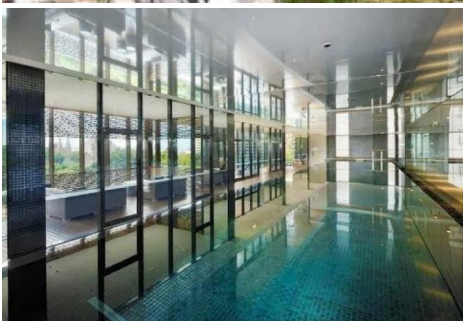


\$770 a week



📍 904/157 Liverpool Street SYDNEY NSW



\$770 a week



📍 904/157 Liverpool Street SYDNEY NSW

Executive Style one bedroom apartment situated at 'The Hyde'

Situated in one of the most desirable addresses in Sydney and overlook the world famous Hyde Park, this one bedroom plus media luxury apartment is sure to make an impression. Designed by the award winning WOHA Architects and developed by Stockland, this property is a must see.

This Luxury property offers:

- Spectacular views from level 9 to Sydney's CBD
- Bright open plan living with quality fittings throughout
- State of the art kitchen with European appliances
- Ultra chic and modern bathroom
- Spacious bedroom with large built-ins
- Internal Laundry
- 1x Washing Machine and 1x Dryer
- Linen cupboard
- Large Media area, perfect for the working professional
- Security parking
- 24 Hour concierge service
- Ultra modern 25 metre lap pool
- Sauna, sun room and BBQ area perfect for relaxing
- Conference room with outdoor decked area
- Walking a distance to CBD, world class restaurants and shopping precincts.

Please book an inspection time or contact the agent if you would like to inspect this property.

By registering for an inspection, you will be instantly informed of any updates, changes or cancellations for your appointment.

Once you have inspected the property, you will be sent a link to apply online by our agency

IMPORTANT Whilst every care is taken in the preparation of the information contained in this marketing, LITTLE Real Estate, will not be held liable for any error in typing or information. All information is considered correct at the time of advertising.

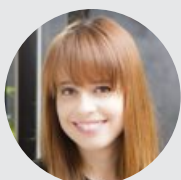
Prior to applying for the property, please ensure any specific requirements have been discussed with your preferred service providers.

Bond

\$3,080

Availability

Tuesday 7 September



Darya Kondyurina

Leasing Consultant, NSW

darya.kondyurina@little.com.au

02 9301 5613

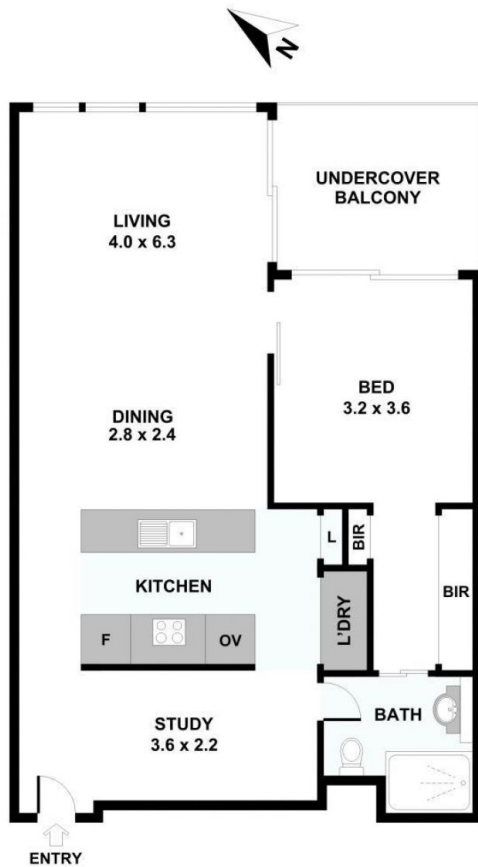
\$770 a week

1 1 1



904/157 Liverpool Street SYDNEY NSW

904/157 Liverpool Street, Sydney



Please note: All stated dimensions are approximate only. Particulars given are for general information only and do not constitute any representation on the part of the vendor or agent.