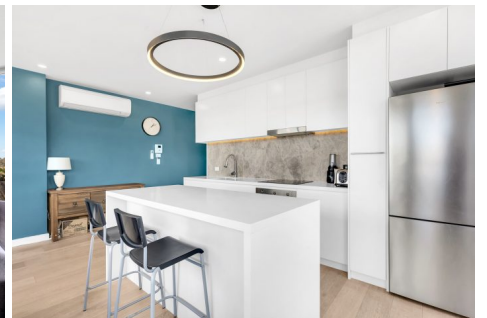


\$450,000 - \$475,000

| 🛏 1 🚿 1 🚗 1



📍 608/39 Racecourse Road NORTH MELBOURNE VIC



\$450,000 - \$475,000



1



1



1



📍 608/39 Racecourse Road NORTH MELBOURNE VIC

Stunning Views, Convenience and Style

****INSPECTIONS BY APPOINTMENT ONLY. PLEASE CONTACT OLIVIA OR ANDREW DIRECTLY TO SCHEDULE YOUR OWN PRIVATE VIEWING AT A TIME TO SUIT YOU.****

Inner city apartment living couldn't be better than this location. Close to Melbourne's major hospitals and Universities, North Melbourne's shopping and dining hub, not to mention a few tram stops to the CBD.

The 6th floor corner position and a '38 sqm' outdoor wrap around area facilitate spectacular views of the City and Royal Park.

A generous and bright floor plan featuring open plan living and meals area, kitchen with Smeg appliances and plenty of storage. Generous double bedroom with views and a beautifully presented bathroom. NBN FTTP.

Further features include a car space (not stacker) and storage cage.

Only moments from the action, easy access to the CBD, markets, public transport, schools, parks and more. It's time take advantage of this high demand location with this stylish apartment surely set to impress. This one won't last long!

For more information please contact Andrew McCalman or Olivia Piccinin.

\$450,000 - \$475,000

🛏 1 🚿 1 🚗 1



📍 608/39 Racecourse Road NORTH MELBOURNE VIC

