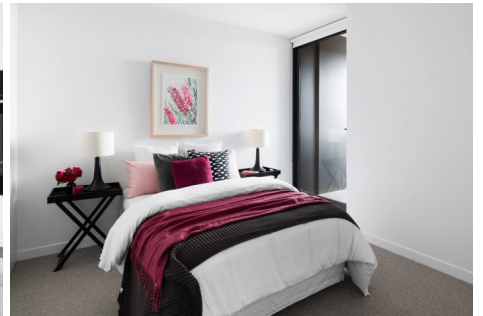
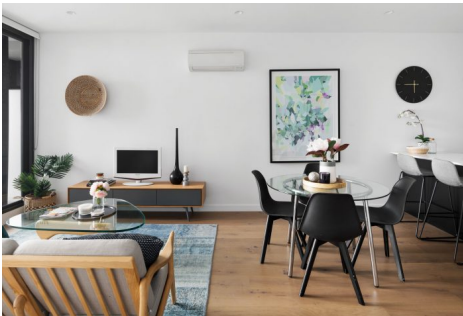


\$649,000

🏠 2 🚿 2 🚗 2



📍 1108/443 Upper Heidelberg Road IVANHOE VIC



\$649,000

🛏 2 🚿 2 🚗 2



📍 1108/443 Upper Heidelberg Road IVANHOE VIC

Elite Ivanhoe indulgence

****INSPECTIONS BY APPOINTMENT ONLY. ADVERTISED INSPECTION TIMES ARE FOR REGISTERED BUYERS ONLY. NO ENTRY PERMITTED WITHOUT PRIOR APPOINTMENT****

An idyllic mix of free-flowing space and breathtaking views from one of the highest points in Melbourne, this stunning 2 bedroom, 2 bathroom entertainer is delicately layered with natural light under soaring ceilings.

Beyond an elegant marble-adorned lobby entrance, enjoy a wonderful sense of depth throughout the luxury layout. A stylish stone-finished kitchen comes complete with high-quality stainless-steel appliances including a full-sized dishwasher, an easy-clean induction cooktop, concealed fridge space, and a waterfall-edged breakfast bar for effortless preparation and presentation.

Floor-to-ceiling glass sensationally frames the 11th floor apartment with a seamless connection from a far-reaching open-plan living and dining area to a private undercover balcony. Showcasing panoramic vistas sweeping across the horizon, every exciting element of this radiant retreat leaves a lasting impression!

- 2 large bedrooms with built-in robes, main with fully tiled ensuite and private balcony
- Second bedroom with commanding city skyline views
- Luxurious principal bathroom with quality fittings and floor-to-ceiling tiles
- Concealed laundry
- Split-system heating/cooling, double glazing and roller blinds
- Character-rich timber flooring
- Secure video intercom entry and high-speed lifts
- Basement parking for 2 cars with storage cage
- Lease ending 19/7/21 at \$470 per week.

You couldn't wish for a more convenient address, so close to Burgundy Street shopping, transport choice, the hospitals precinct, leading schools, local parkland, and easy access to the Eastern Freeway. The benchmark Ivanhoe Apartments complex offers world-class, resort-inspired amenities including a heated infinity pool and sun deck with city views, a fully equipped gym, and a residents' lounge with kitchen, dining and entertaining facilities. A rare offering of unique pedigree designed by the unrivalled Fender Katsalidis (Eureka Tower and MONA), this is where thoughtful attention to detail and luxury living unite!

For more information, please contact Shawn White today.

\$649,000

🛏 2

🚿 2

🚗 2



📍 1108/443 Upper Heidelberg Road IVANHOE VIC



Shawn White

State Sales Leader - Licensed Estate Agent, VIC

shawn.white@little.com.au

0425 335 034

\$649,000

🛏️ 2 🚿 2 🚗 2



📍 1108/443 Upper Heidelberg Road IVANHOE VIC

