

\$520,000 | 🏠 2 🚿 1 🚗 1

📍 3/232 Blaxland Road RYDE NSW



\$520,000

🛏 2 🚿 1 🚗 1



📍 3/232 Blaxland Road RYDE NSW

Bright, Spacious & Recently Renovated Apartment Only 600m From Top Ryde Centre

VIEW BY APPOINTMENT ONLY - CONTACT SIMON SAAD 0424 424 236
TO ALLOCATE A TIME SLOT FOR A PRIVATE VIEWING

Enjoying a north west aspect with a leafy outlook, this centrally positioned apartment warrants serious consideration for its growth potential in an ever-popular location.

Providing ease of access, this elevated ground floor apartment has windows on both sides, inviting plenty of natural light. Renovated within the past five years, interiors are up to date and ready to enjoy.

- Complete with well-scaled bedrooms with built ins
- Internal laundry and access to extra storage space
- A sunny balcony spanning the length of the unit, great for entertaining
- Stunning near new bathroom tiled to the ceiling
- Bright and tidy electric kitchen set with upgraded stainless steel appliances
- Valuable under cover secure parking space
- This superb apartment covers all of the essentials within a boutique building of 15

It's solidly built and has proven its value as a reliable investment in a well-connected neighbourhood.

North-west facing to draw in abundant natural light.

This address enjoys close proximity to the vast array of shops, eateries and entertainment venues available at Top Ryde. It's within a 5km radius of both Macquarie Park and Rhodes Waterside.

For more information, please contact Simon Saad on 0424 424 236



Simon Saad

Sales Consultant, NSW

simon.saad@little.com.au

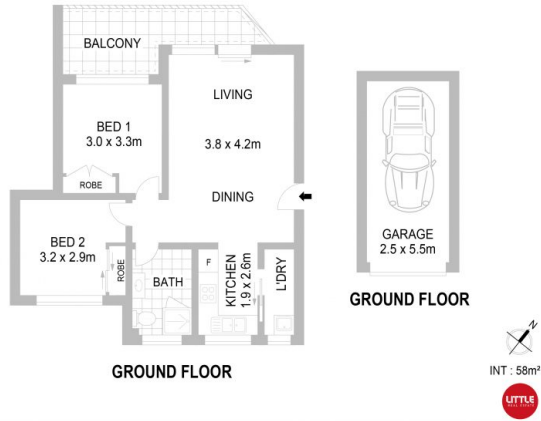
0424 424 236

\$520,000

2 1 1



3/232 Blaxland Road RYDE NSW



This floorplan is intended as a guide only. Layout dimensions are approximate only.
No representations or warranties of any nature whatsoever are given or intended. Anyone using this information should rely on their own enquiries.