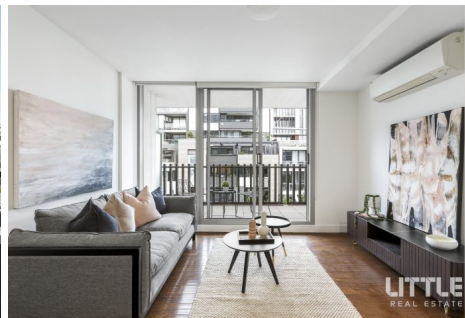


\$450,000

🏠 1 🚿 1 🚗 1

📍 229/70 Nott Street PORT MELBOURNE VIC



\$450,000

1 1 1



229/70 Nott Street PORT MELBOURNE VIC

Modern and easy beachside pad!

INSPECTIONS BY APPOINTMENT ONLY. ADVERTISED INSPECTION TIMES ARE FOR REGISTERED BUYERS ONLY. NO ENTRY PERMITTED WITHOUT PRIOR APPOINTMENT.

This sleek, stylish, and incredibly low-maintenance apartment is a blissful beachside pad that offers you a Port Melbourne lifestyle to cherish.

A second floor position in the '70 Nott Street' complex is an affordable slice of Port Melbourne which is ideal for owner-occupiers who want to be steps to the beach as well as investors.

The quality and attention to detail of this property is sensational, and includes touches such as bright-floor-to-ceiling windows, engineered timber floors, and premium stone benches.

You'll appreciate the open floorplan and easy care nature of this residence. You further have access to an on-site building manager.

- Relaxed lounge and meals zone with great light!
- Deluxe kitchen with s/steel Miele appliances
- South-facing balcony for cheeky summer drinks
- Bedroom with BIR, stylish bathroom with laundry
- Reverse cycle heat/cool, secure intercom entry

Aside from being steps to amazing cafes/restaurants and Port Melbourne Beach, you're also not far from Edwards Park, Lagoon Reserve, and light rail services to Southbank and the CBD.

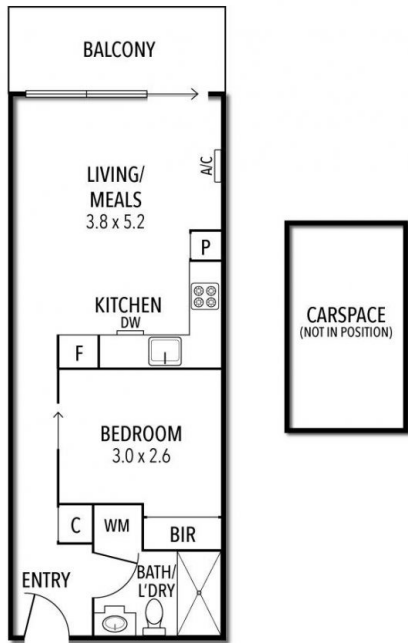
\$450,000

🛏 1 🚽 1 🚗 1



📍 229/70 Nott Street PORT MELBOURNE VIC

229/70 NOTT STREET, PORT MELBOURNE



THE ABOVE PLAN IS AN ARTIST'S IMPRESSION ONLY. IT INCLUDES ELEMENTS THAT ARE FOR DISPLAY PURPOSES ONLY AND MAY NOT BE TO SCALE. LANDSCAPING SHOWN IS INDICATIVE ONLY. DIMENSIONS ARE APPROXIMATE.