

\$820,000 - \$880,000 | 4 2

7 Price Court DIAMOND CREEK VIC



\$820,000 - \$880,000 |  4  2



 7 Price Court DIAMOND CREEK VIC

OFFERS CLOSING SATURDAY 13TH FEBRUARY AT 5PM.

An abundance of charm at the head of a quiet cul- de- sac, this stunning family home set on an 898m² allotment (approx.) offers a comfortable and convenient lifestyle. Situated in the St Helena College zone and only moments from shops, public transport and parklands. The prime location allows for quick and easy access to all local amenities.

Opening into the bright and stylish interior with vaulted ceilings allow natural light to create a welcoming feel while facilitating modern day living. Contemporary shaker style cabinetry throughout the well-appointed kitchen and laundry is sure to impress.

Downstairs, an oasis for parents with a spacious master bedroom, dressing room, ensuite and ample robing and cupboard storage. Upstairs 3 additional bedrooms with built in robes and 1 with walk in robe. A bright family bathroom complete with a clawfoot bath and separate toilet.

Enjoy sweeping treetop views of the Kinglake ranges from the front deck, bedroom or expansive backyard. Alfresco dining with a view from the elevated back deck or outdoor entertaining on the patio is sure to delight. Additional features include ducted heating, evaporative cooling and reverse cycle air conditioning in the main bedroom, generous space for future additions such as a pool (STCA). Ample parking for multiple cars, trailers or a boat and the convenience of a flat driveway (the only one in the court).

A rare opportunity to secure a quiet and family friendly location with an impeccably presented home.



Shawn White

Sales Consultant - Licensed Estate Agent, VIC

shawn.white@little.com.au

0425 335 034

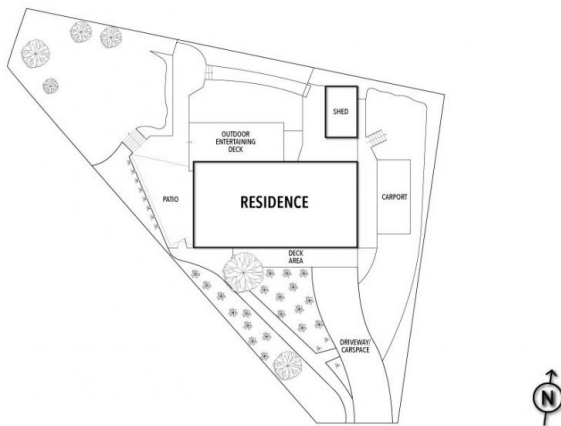
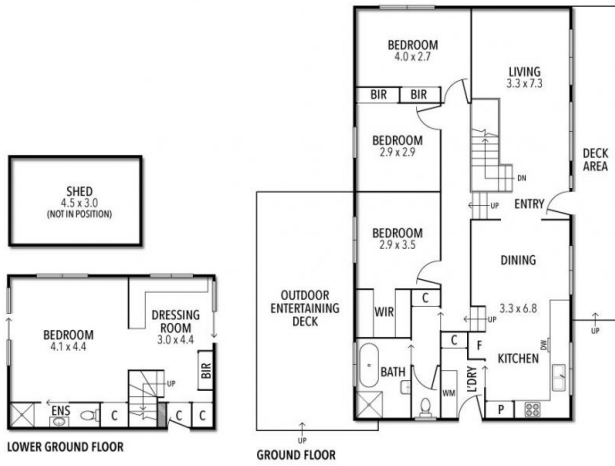
\$820,000 - \$880,000

4 2



7 Price Court DIAMOND CREEK VIC

7 PRICE COURT, DIAMOND CREEK



THE ABOVE PLAN IS AN ARTIST'S IMPRESSION ONLY. IT INCLUDES ELEMENTS THAT ARE FOR DISPLAY PURPOSES ONLY AND MAY NOT BE TO SCALE. LANDSCAPING SHOWN IS INDICATIVE ONLY. DIMENSIONS ARE APPROXIMATE.