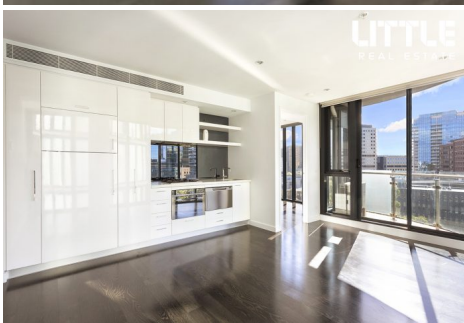


**\$489,000 - \$519,900** | 🏠 2 🛏 1 🚗 1

📍 705/338 Kings Way SOUTH MELBOURNE VIC



**\$489,000 - \$519,900**

|  2  1  1



 705/338 Kings Way SOUTH MELBOURNE VIC

## Luxury living with stunning views

From its privileged perch overlooking the city skyline, this sleek and stylish 2 bedroom apartment offers luxury living at its most daring and engaging. Framed by floor-to-ceiling glass in a corner setting, enjoy the spacious comforts of open-plan living and dining flowing through to a private, north-facing balcony. Housed inside the celebrated Silverleaf complex and finished to the highest standards, take advantage of a prime position so close to Albert Park, Southbank, Clarendon Street and moments from the CBD. Easy to love, exceptional to live in and effortless to rent out, this is one inspection to savour.

- \* 2 large bedrooms with BIRs
- \* Spacious open-plan living and dining
- \* Galley kitchen with Smeg appliances and stone benchtops
- \* Private balcony with sensational skyline views
- \* Luxury, fully tiled bathroom with oversized shower
- \* European laundry
- \* Separate toilet
- \* Secure basement car parking and integrated storage
- \* Chic timber flooring
- \* Split-system heating and cooling
- \* Secure intercom entry
- \* Moments from South Melbourne Market, transport, restaurants, CBD, parklands



**Eric Lim**

*Senior Sales Consultant, VIC*

eric.lim@little.com.au

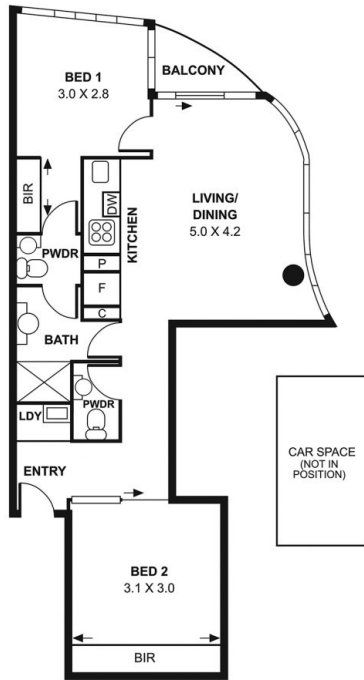
0420 388 839

**\$489,000 - \$519,900**

2 1 1



705/338 Kings Way SOUTH MELBOURNE VIC



This floor plan is intended as a guide only. Layout dimensions are approximate only.  
No representations or warranties of any nature whatsoever are given or intended.  
Any person using this information should rely on their own enquiries.