

\$430,000 - \$460,000

|  3  2  1



 15 Persimmon Way DOREEN VIC

Affordable family space

Spacious, stylish and filled with natural light, live the life of your dreams in this stunning 3 bedroom home in the serene surrounds of Orchard Grove Estate.

Discover wide-reaching open-plan living/dining, and a sparkling kitchen with stainless-steel appliances and a dishwasher plus an inviting breakfast bar.

Perfectly positioned in a family-focused neighbourhood, investors will appreciate the value and first homebuyers can enter the market with certainty.

- * 3 large bedrooms, main with WIR and private ensuite, 2 with BIR
- * Luxurious family bathroom with bath and walk-in shower
- * Separate laundry and WC
- * Split-system heating and cooling plus roller blinds
- * Remote-controlled garage with internal entry
- * Low-maintenance, landscaped garden and yard

Nestled in the Hazel Glen College zone, enjoy a short drive to local shopping and city-bound Mernda trains. This is luxury living without compromise!

For more information, please contact Alex Melnychuk today.



Alex Melnychuk

Sales Consultant - Licensed Estate Agent, VIC

alex.melnichuk@little.com.au
0404 173 343

\$430,000 - \$460,000

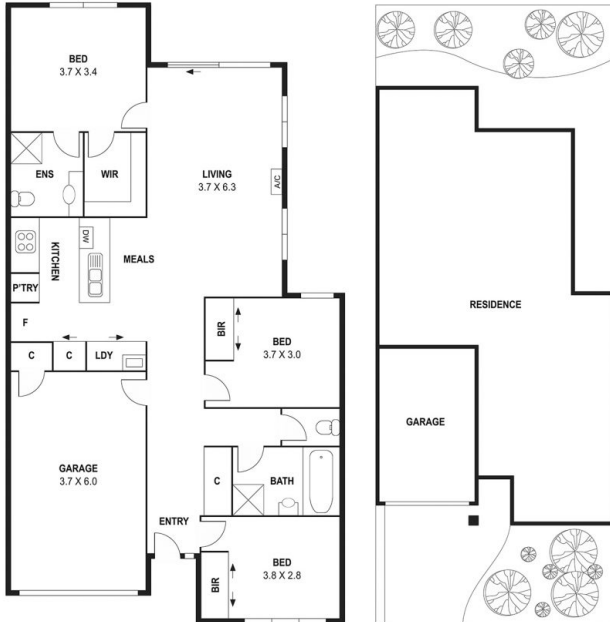
3

2

1



15 Persimmon Way DOREEN VIC



0m 2m
APPROX INTERNAL AREA 127 SQMS
APPROX LAND SIZE 237 SQMS

This floor plan is intended as a guide only. Layout dimension are approximate only.
No representations or warranties of any nature whatsoever are given or intended.
Any person using this information should rely on their own enquiries.