

# Deceased Estate - Auction Team Gregory-Aylett



🏠 1 📄 1 🚗 1

📍 11/58 Ocean Street WOOLLAHRA NSW



# Deceased Estate - Auction Team Gregory-Aylett



🏠 1 📄 1 🚗 1

📍 11/58 Ocean Street WOOLLAHRA NSW

## Idyllic Retreat, A Stroll To Queen Street

### Auction date

Exceptionally located in 'Chiswick Gardens' within a stroll of Queen Street village, this beautifully presented apartment provides an idyllic lifestyle retreat for first homebuyers and investors alike.

Tuesday 30 March, 6:00PM

Wonderfully spacious and brimming with natural light, it reveals a clever layout with fresh, neutral interiors exuding a warm and welcoming ambience.

It features a combined lounge/dining area opening to an undercover balcony, awash with sunshine while overlooking the leafy streetscape and Chiswick Park. There is a neat and tidy kitchen with ample cupboard storage, while the bedroom is generous and appointed with a built-in wardrobe and a bright and airy ensuite bathroom.

Additional features include split-cycle air conditioning, a shared laundry room and an invaluable car space.

Wonderfully spacious layout with combined lounge/dining area  
Sizeable undercover balcony enjoys Chiswick Park views  
Fresh interiors, high ceilings, abundant natural light  
Neat and tidy kitchen, bright and airy ensuite bathroom  
Air conditioning, shared laundry, invaluable car space

It is positioned opposite beautiful Chiswick Park, a level walk to gourmet village shops and popular eateries, buses, Edgecliff Station and Centennial Parklands.

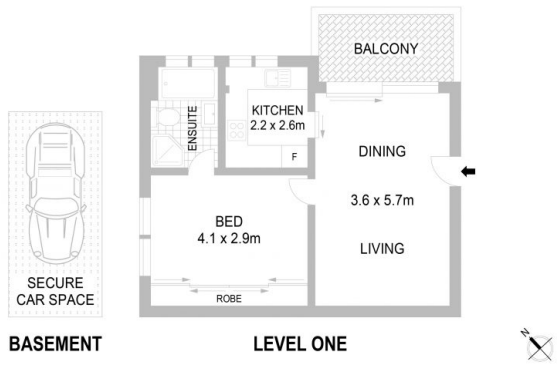
For more information, please contact Ben Gregory-Aylett on 0401 077 078 or Grace Randell on 0425 451 923.

# Deceased Estate - Auction Team Gregory-Aylett



1 1 1

11/58 Ocean Street WOOLLAHRA NSW



This floorplan is intended as a guide only. Layout dimensions are approximate only.  
No representations or warranties of any nature whatsoever are given or intended. Anyone using this information should rely on their own enquiries.